

A modern office interior featuring a glass-walled reception area and a large open-plan workspace. The ceiling is a complex, perforated grid that creates a pattern of light and shadow. A woman is seated at a white reception desk with blue lighting, and another woman is walking in the foreground, blurred. The floor is light wood, and the walls are dark grey with glass panels. The number '22' is visible on the wall panels.

+ Workplace Environments

Dream. Think. Do. Together.

We are Svigals + Partners, an award-winning architecture and art integration firm imagining a better future. We share with our clients a commitment to improving lives in education, science-tech, healthcare, and community-building. At the heart of our practice is the seamless blending of architecture, art, and storytelling designed to create experiences that nourish life. Our most successful projects emerge from close collaboration, and we hold dearly the belief all of us are smarter than any one of us.



OUR VISION:

A compassionate world inspired to create a better future together.

OUR MISSION:

To design artful solutions with passion and purpose, enriched by meaningful collaboration.

“Our Svigals project is our **Crown Jewel**”

2023 **Fast Company Innovation by Design Award** Finalist | Learning Category
2022 **CREW CT Social Impact Award**



2021 **Chicago Athenaeum American Architecture Award**
2021 **Interior Design Magazine Best of Year Award**
2021 **AIA CT Design Award** ... *to name just a few*

1983 ESTABLISHED
85% REPEAT CLIENTS
75+ INDUSTRY AWARDS

03 LOCATIONS
CT, DC, FL
LICENSED IN
12 STATES

**WORLD'S TOP 10
MOST INNOVATIVE
COMPANIES IN ARCHITECTURE
AS NAMED BY FAST COMPANY**

CONNECTICUT CERTIFIED
SMALL BUSINESS ENTERPRISE

2021 Recipient of the Greater
New Haven Chamber of Commerce
**Equity & Inclusive
Opportunity Award**

PARTNERS

Jay Brotman, AIA
Bob Skolozdra, AIA, LEED AP
Chris Bockstael, AIA
Doug Lovegren, AIA

28 STAFF MEMBERS

12 LICENSED ARCHITECTS

03 LEED AP CERTIFIED

02 WELL AP CERTIFIED

03 NCIDQ CERTIFIED
INTERIOR DESIGNERS

Civic-Cultural + Education + Healthcare
+ Mixed-Use/Residential + Science-Technology + Workplace

Our Team

Svigals + Partners nurtures a creative, collaborative spirit. We believe in multi-functional teams working together to support shared knowledge, problem solving, learning, and risk taking. Ours is an open environment where people feel valued, heard, and connected to a larger purpose -- resulting in greater creativity and innovation.

We believe this team culture works in harmony with individuals developing chosen areas of expertise. As such, we have committed leaders for sustainability, technology, quality control, graphic design, and equity/diversity, among other disciplines.

Together, we form a whole. We practice gratitude and respect. We value asking over telling. Wondering over knowing. Let us share our experience with you creating the community to which we all aspire.



Chris Bockstael, AIA | Partner

With more than twenty years experience, Chris has championed a wide array of project types for a diverse range of clients, including PepsiCo, ESPN, and Yale University. Known for his discerning eye, Chris is valued for his mastery as a lead designer and project architect. He approaches each project uniquely, and believes the highest level of design and professional service go hand-in-hand. Chris approaches creativity through the holistic integration of sustainability, client vision, culture, and program to develop lasting and meaningful environments.



Katherine Berger, NCIDQ, WELL AP | Director of Interior Design

Katherine sees potential where others do not. It is this discerning eye and expertise that enables her to reimagine spaces and optimize well-being and productivity. Her diverse portfolio spans the healthcare, education, and corporate sectors. Most recently, she led our bi-coastal workplace efforts for Technolutions and Biohaven, and she has worked on numerous projects for Yale University. Intrigued by human behavior, Katherine was drawn to interior design for its ability to improve the human condition through the built environment. Her ambition is to bring wellness and beauty into the daily lives of her clients.



Marissa Mead, AIA, LEED AP | Director of Art Integration

Marissa has contributed as an artist and architect to more than 100 projects at Svigals + Partners. Among the first in the industry to hold the title of Director of Art Integration, Marissa consistently unites architecture, sculpture, and story-telling to create meaningful places. In 2019, two of her project designs received national recognition: New Britain's sculptural Beehive Bridge, and her pro-bono design for New Haven's Botanical Garden of Healing. In 2020, Marissa was honored to be named to Connecticut Magazine's prestigious 40 Under 40 list.

Our Process

Svigals + Partners was founded to create environments where life is nourished by the experience of the architecture.

Our process aims to cultivate a collective sense of purpose. We begin by asking animating questions to understand your vision, mission, and experience -- from which priorities emerge. Sometimes this engagement process is a small, select group. Sometimes it's expansive, including a wide array of stakeholders. Our process is adaptable and customized to your uniqueness.

Immersed in what we've heard and seen, we begin to design. Always through the lens of opportunity, we look for sharp edges that need smoothing and solutions that need more thinking. We repeatedly ask ourselves how can the design better serve the person, the organization, and the world? Led by aims and aspirations, we pursue a meaningful contribution to the unique nature of each place and each community.

Unique to our process is the integration of architecture, art, and storytelling. Art has always been an essential part of human culture, and experiencing art calls us to the humanity we share. By incorporating art into architecture, we create a resonance that binds community together, inspiring all to be their best selves.



Our Impact

Our clients are passionate about improving lives.

They are educators training tomorrow's leaders, biotech firms seeking cures, healthcare providers caring for old and young, and civic, cultural, corporate, and non-profit organizations serving communities.

Our client's mission is our mission, and we strive every day to create a better future together.

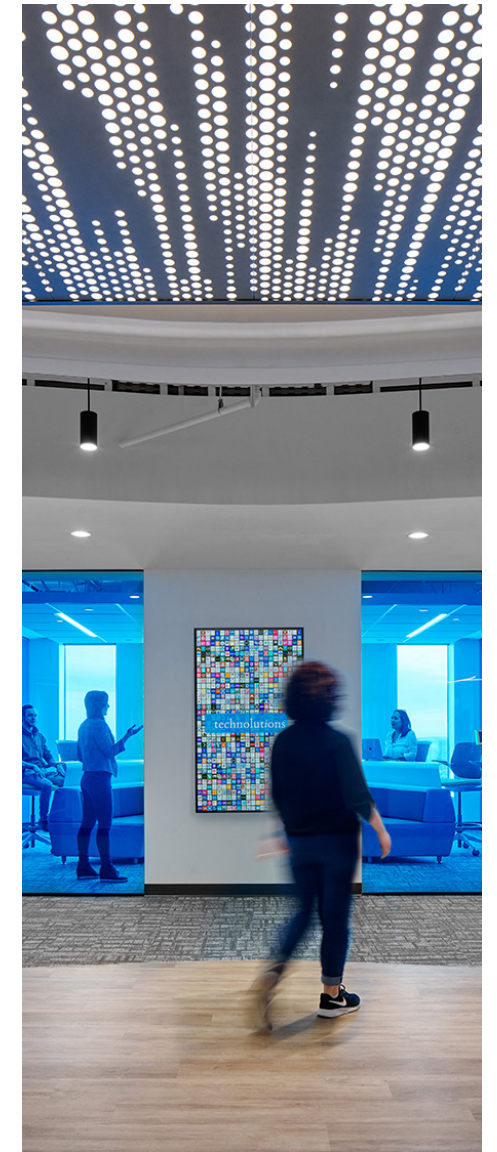




Telling Your Story

Every organization has its own unique story and culture. When that story is told in your environment, it creates an emotional connection with those who experience it. The result is a sense of pride and belonging that fosters affinity and loyalty.

We believe in engaging our clients in the design process, so the space becomes yours. We listen and translate who you are and what you do into an environment that uniquely supports your business culture. Our process teaches all of us about each other, and often, we learn more about ourselves.

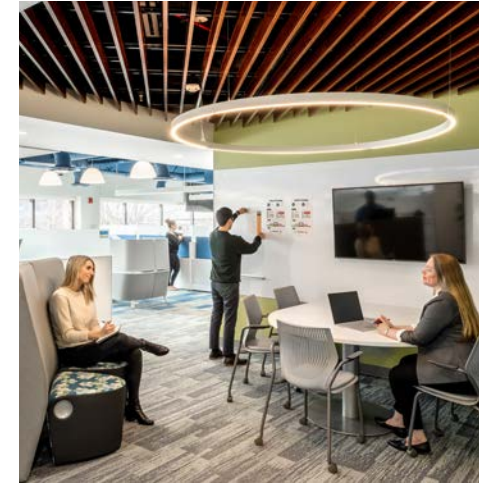




Flexibility and Choice

Throughout our days, we move from focused work to collaborative team meetings to training sessions and back again. Responding to this ebb and flow requires a variety of workspaces designed to optimize work styles and functions.

We work with clients to ensure their community has the environment, technology, and amenities needed for engagement, teamwork, and productivity.





The Power of Community

At Svigals, we believe in the importance of establishing a workplace community. When colleagues feel a personal connection to each other, they are more open to new perspectives and ideas.

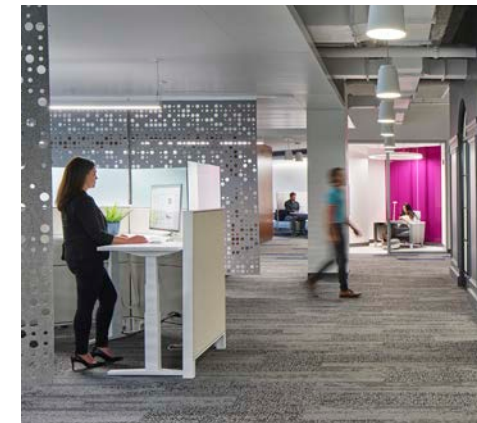
We ensure there is space for this. Breakrooms, lounges, chill spaces, and even “the spaces in between” can be utilized to promote team cohesion and collaboration. Sometimes a little time spent refreshing, rebooting, and recharging is exactly what’s needed to make a breakthrough.

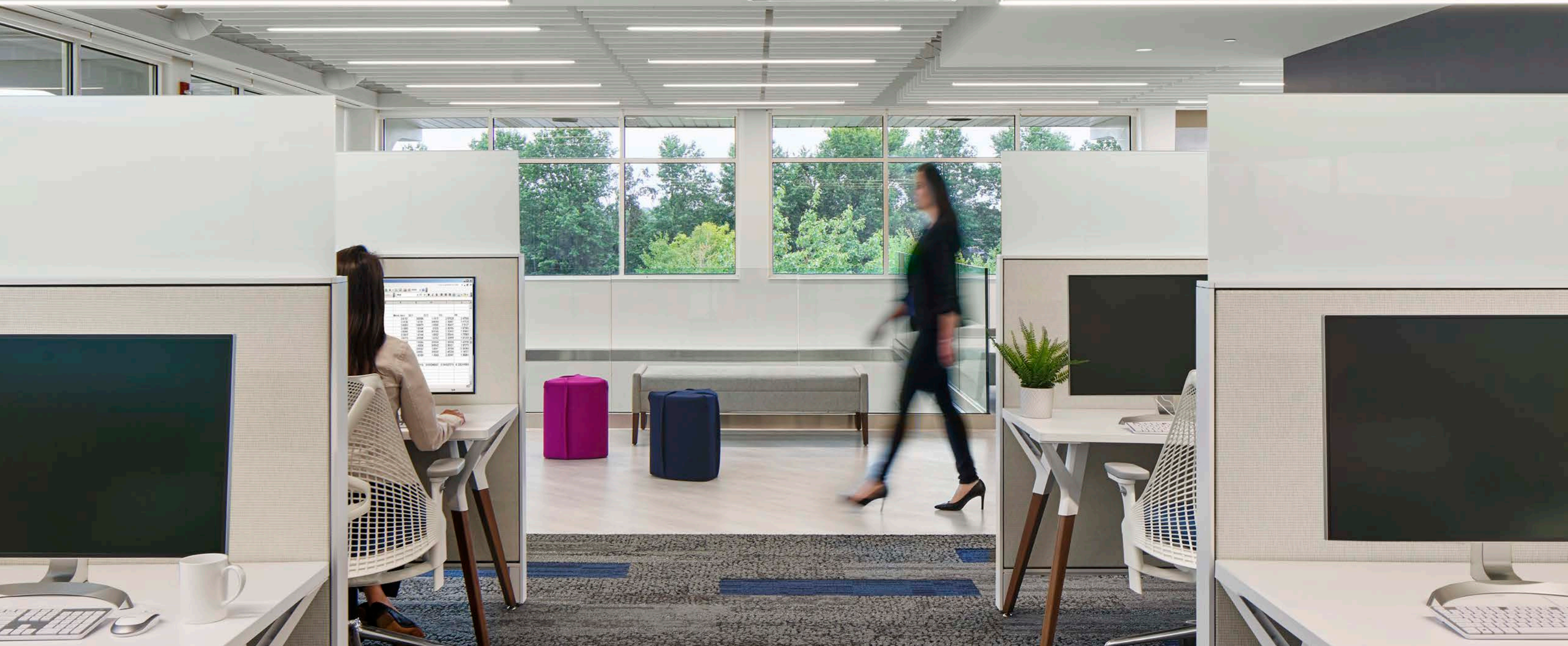




Well-Being Impacts Everything

Color, light, biophilia, and art matter. They enhance moods and bring spaces meaning. The way a pattern rhythmically plays out, the way rich textures engage, the way elements dialogue with one another – these are the details that inspire. Whether created to energize, soothe, activate, or motivate, our designs seek to lift the human experience. This is the canvas upon which we all become our best selves.



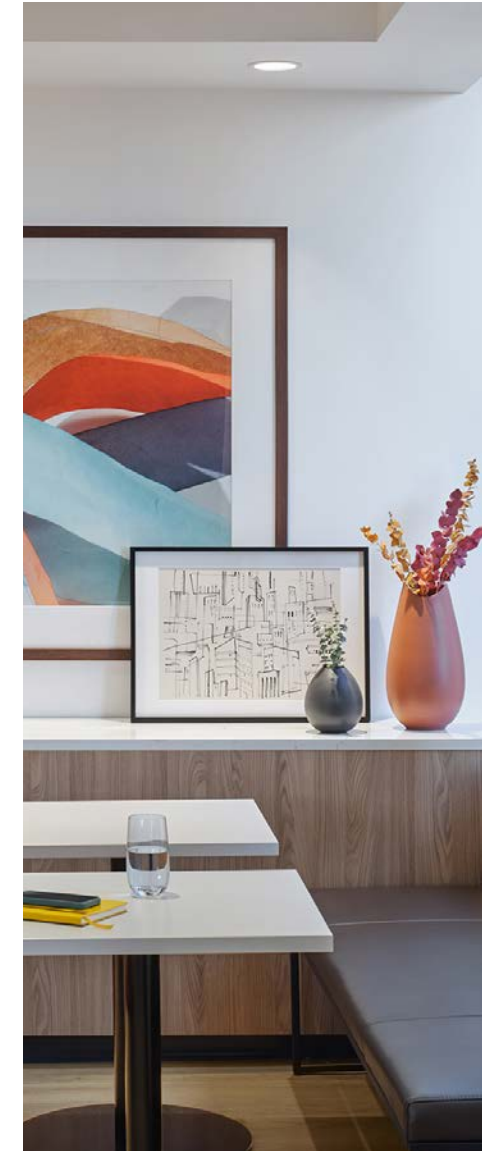




Kreitler Financial LLC

The new headquarters for Kreitler Financial blends professional sophistication with homelike comfort to convey their brand story of caring, personalized service. From the project's outset, Kreitler emphasized the importance of ensuring that their new space puts visitors at ease and makes their staff feel at home.

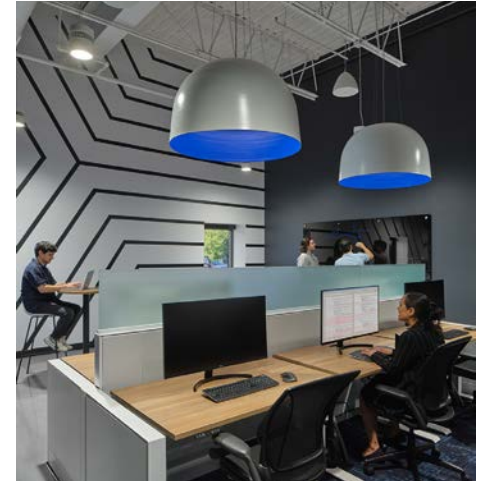
To achieve this, Svigals + Partners drew inspiration from residential settings, incorporating copious daylight, comfortable furnishings, area rugs, curated decorative pieces, and a rich, textural palette of earth tones. The finished space is welcoming and approachable, while also fulfilling the business, conferencing, and meeting needs of the company today and anticipating their future growth.





Quantum-Si Inc.

Consolidating two prior facilities into a single, technologically advanced research base, protein sequencing company Quantum-Si Inc. turned to Svigals + Partners to design a new headquarters in a Branford, CT business park. Working with QSI's facility team on a tight schedule, the new headquarters supports sensitive, cutting-edge equipment for both wet and dry laboratories while serving as a springboard for Quantum-Si's anticipated growth trajectory. The open interiors present a healthy, easy-to-adapt environment equipped with key conveniences and safety features, from flexible lab benches and adjustable lighting systems to highly efficient fume hoods and mechanical systems. To reinforce its brand, S+P merged QSI's geometric crisp, white-on-black brand motif with lively graphics, engaging art, and natural wood-like elements offering a refreshing counterpoint.





ESPN Technology Innovation Zone

With the goal of creating an interdisciplinary workspace for various tech groups, S+P reimagined this 9,000 square foot facility into a vibrant, technology-driven, and innovative lab. The flexible environment serves a range of project teams while also aligning with the company's high-level goal of attracting and retaining the best and the brightest talent. The result features abundant natural light, flexible open work pods, conference/huddle rooms, film production space, a tiered theater, a green room, and a lounge. The new environment is now understandably known as one of the most innovative and enjoyable places to work on campus.

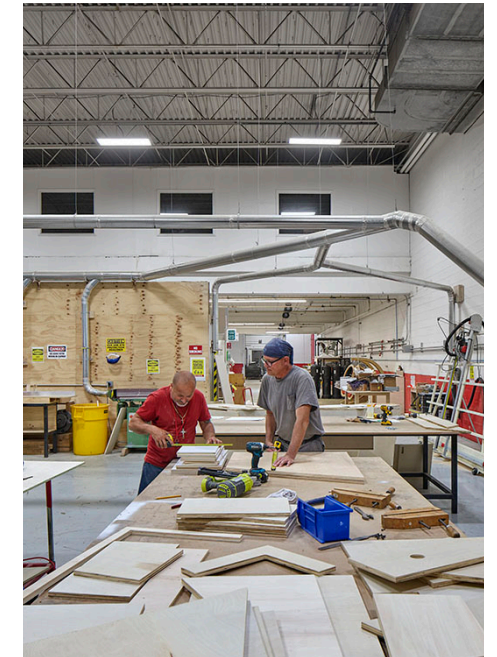
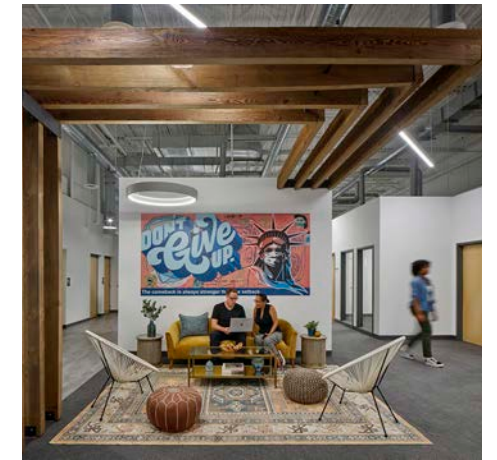




Innovative Display & Design

Planning for new opportunities and facing growing space needs, Innovative Design & Display engaged Svigals + Partners to renovate this warehouse into a multi-use office and production facility. S+P's hallmark collaborative approach with IDD's executive team unearthed challenges holding IDD back. The findings led to limiting the double handling of material and right-sizing office, display, and warehouse space all within one facility.

A modern industrial aesthetic characterizes the environment with exposed mechanical systems, open interiors and outdoor areas bringing in natural light, bold graphic artwork, and a neutral color palette that creates movement and life. The resulting space brought to life IDD's identity as a caring, family-based organization while maximizing departmental efficiency and encouraging opportunities to collaborate, connect, and socialize in a variety of areas.





Rubicon Technology Partners

Consolidating Rubicon's Eastern U.S. operations into a single cohesive workplace in downtown New Haven, the new headquarters provides flexibility, performance, and support for the company's workflow within a small area. A central atrium and large windows along the front exposure allow for dramatic daylighting, while glass doors and partitions expand the interior volume. Exposed structural brick walls, ductwork, and dropped ceiling panels round out the modern, industrial design aesthetic.

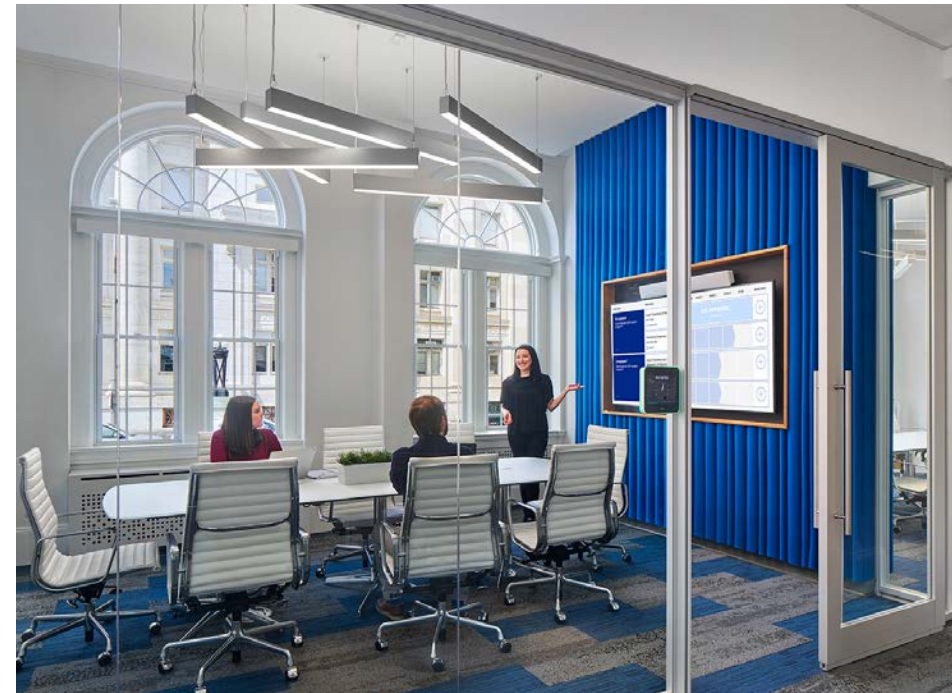
Optimizing the compact nature of the space, Svigals + Partners innovative design prioritizes collaboration and visual connection to align with the company's people-oriented, transparency-based ethos. By taking advantage of the entire space, Rubicon's team has best-choice options for heads-down work, formal and casual collaborations.





Biohaven Pharmaceuticals | New Haven & Pennsylvania

For both their New Haven headquarters and their mid-Atlantic expansion, S+P brought this innovative company's brand to life for their highly mobile workforce. Designed for individual, group, and leadership functions, Biohaven's environment artfully articulates its bold, rapid-response nature in elements including a sculptural "communicating stair" connecting floors, and custom perforated panels that relate the office to each other. Designed to be flexible and dynamic, the stunning results feature a wide variety of workstations, conference rooms, an expandable training center, pantries, and casual spaces that create vibrant settings for innovation and leadership.







Technolutions | New Haven & Portland

Tasked with concurrently designing offices in Connecticut and Oregon, S+P used an elevated, outer-worldly sensibility to create cohesive, fresh spaces for this leading educational software developer. A blue glass-encased team room used for conferencing and frequent team summits anchors the 21,000-square-foot New Haven headquarters, surrounded by workstations, call rooms, casual gathering areas, and a breakroom with a dropped cloud ceiling. Concealed speakers and projectors allow for full audiovisual access in all the office and meeting zones, and connects the bi-coastal work places. An experiential lobby with a “step-off-the-elevator transportive impact” makes dramatic use of the ceiling’s starry-night illumination in both offices. Inspired by the client’s vision, these state-of-the-art results “wow” employees and visitors alike, and express the brand’s sense of freedom, possibility and exceptional service.





Yale School of Medicine Administration

Through our continued relationship with Yale University, Svigals + Partners revived a former AT&T building into Yale School of Medicine's new administrative facility serving 500 staff members. This LEED Silver project had an extremely fast design, documentation, and construction schedule despite the challenges of bringing multiple departments under the same roof for the first time. An extensive programming study was required to understand each department's needs, work processes, and requirements. In combination with our already strong understanding of YSM's standards and properties, the findings were woven together to create a new, open work pedagogy intended to inform all of Yale's work environments for years to come.



Relationships

We don't just build buildings; We build relationships. Thank you to all our partners, including these select Workplace clients:

Alexion Pharmaceuticals
Arvinas, Inc.
Biohaven Pharmaceuticals
Budderfly, Inc.
Connecticut College
Continuum of Care, Inc.
ESPN
Higher One, Inc.
Hole in the Wall Gang Camp
Knights of Columbus
PepsiCo, Inc.
Quantum Circuits, Inc.
Rubicon Technology Partners
Technolutions
The Simon Konover Company
Wood Creek Capital Management
Yale-New Haven Hospital
Yale University

Keep us in mind for your Workplace needs, and let's see what we can build together.



Clients Are Saying

“**BEYOND** my expectations.”

“I’m **THRILLED** with the design.”

“Svigals has **NO COMPETITION**
in terms of *creativity and collaboration.*”

“The process of **COLLABORATION** was outstanding.”

“Our Svigals project is our crown jewel.”

“Svigals cares about the
project, the client, and
meeting client needs.
That shows.”

“FANTASTIC IN REACHING CONSENSUS”

“Just the right amount of weird.”

“All architects think about the end-user first, but
Svigals **THINKS OF THE CLIENTS** too.”

“Not your typical
architect. **NOTHING**
COOKIE-CUTTER.”

“**NO CLASHING**
which has
happened with other
architectural firms.”





SVIGALS + PARTNERS

84 Orange Street
New Haven, CT 06510

203.786.5110
svigals.com

4075 Wilson Boulevard, 8th Floor
Arlington, VA 22203

202.870.4550

100 SE 3rd Avenue, Suite 1000
Fort Lauderdale, FL 33394

954.498.3826