



+ Healthcare &  
Life Sciences

## Dream. Think. Do. Together.

We are Svigals + Partners, an award-winning architecture and art integration firm imagining a better future. We share with our clients a commitment to improving lives in education, science-tech, healthcare, and community-building. At the heart of our practice is the seamless blending of architecture, art, and storytelling designed to create experiences that nourish life. Our most successful projects emerge from close collaboration, and we hold dearly the belief all of us are smarter than any one of us.





## OUR VISION:

A compassionate world inspired to create a better future together.

## OUR MISSION:

To design artful solutions with passion and purpose, enriched by meaningful collaboration.

“Our Svigals project is our **Crown Jewel**”

2023 **Fast Company Innovation by Design Award** Finalist | Learning Category  
2022 **CREW CT Social Impact Award**



2021 **Chicago Athenaeum American Architecture Award**  
2021 **Interior Design Magazine Best of Year Award**  
2021 **AIA CT Design Award** ... *to name just a few*

**1983** ESTABLISHED  
**85%** REPEAT CLIENTS  
**75+** INDUSTRY AWARDS

**03** LOCATIONS  
CT, DC, FL  
LICENSED IN  
**12** STATES

**WORLD'S TOP 10  
MOST INNOVATIVE  
COMPANIES IN ARCHITECTURE  
AS NAMED BY FAST COMPANY**

CONNECTICUT CERTIFIED  
SMALL BUSINESS ENTERPRISE

2021 Recipient of the Greater  
New Haven Chamber of Commerce  
**Equity & Inclusive  
Opportunity Award**

### PARTNERS

Jay Brotman, AIA  
Bob Skolozdra, AIA, LEED AP  
Chris Bockstael, AIA  
Doug Lovegren, AIA

**28** STAFF MEMBERS

**12** LICENSED ARCHITECTS

**03** LEED AP CERTIFIED

**02** WELL AP CERTIFIED

**03** NCIDQ CERTIFIED  
INTERIOR DESIGNERS

Civic-Cultural + Education + Healthcare  
+ Mixed-Use/Residential + Science-Technology + Workplace

## Our Team

Svigals + Partners nurtures a creative, collaborative spirit. We believe in multi-functional teams working together to support shared knowledge, problem solving, learning, and risk taking. Ours is an open environment where people feel valued, heard, and connected to a larger purpose -- resulting in greater creativity and innovation.

We believe this team culture works in harmony with individuals developing chosen areas of expertise. As such, we have committed leaders for sustainability, technology, quality control, graphic design, and equity/diversity, among other disciplines.

Together, we form a whole. We practice gratitude and respect. We value asking over telling. Wondering over knowing. Let us share our experience with you creating the community to which we all aspire.



**Jay Brotman, AIA**  
Managing Partner



**Robert Skolozdra, AIA, LEED AP**  
Partner



**Chris Bockstael, AIA**  
Partner



**Doug Lovegren, AIA**  
Partner



**Alana Konefal, AIA**  
Associate Principal, Project Manager



**Amanda Lamontagne Maron,**  
**AIA, NCARB, Dir. of Washington DC**  
Office, Project Manager



**Joe Rufrano, Assoc. AIA, LEED AP**  
Associate, Project Manager



**Brian Stancavage, AIA, CDT**  
Associate, Project Manager



**Katherine Berger, NCIDQ, WELL AP**  
Assoc. Principal, Dir. of Interior Design



**Marissa Mead, AIA, LEED AP**  
Assoc. Principal, Dir. of Art Integration



## Our Process

Svigals + Partners was founded to create environments where life is nourished by the experience of the architecture.

Our process aims to cultivate a collective sense of purpose. We begin by asking animating questions to understand your vision, mission, and experience -- from which priorities emerge. Sometimes this engagement process is a small, select group. Sometimes it's expansive, including a wide array of stakeholders. Our process is adaptable and customized to your uniqueness.

Immersed in what we've heard and seen, we begin to design. Always through the lens of opportunity, we look for sharp edges that need smoothing and solutions that need more thinking. We repeatedly ask ourselves how can the design better serve the person, the organization, and the world? Led by aims and aspirations, we pursue a meaningful contribution to the unique nature of each place and each community.

Unique to our process is the integration of architecture, art, and storytelling. Art has always been an essential part of human culture, and experiencing art calls us to the humanity we share. By incorporating art into architecture, we create a resonance that binds community together, inspiring all to be their best selves.





## Our Impact

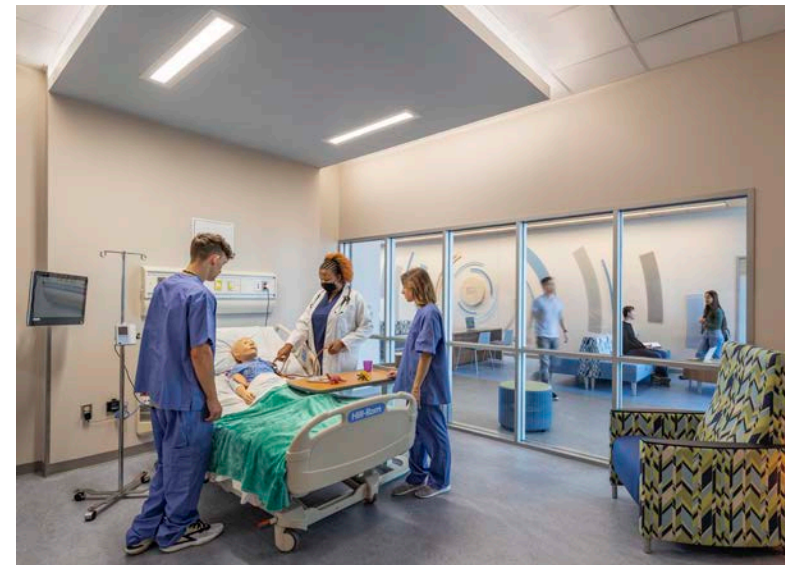
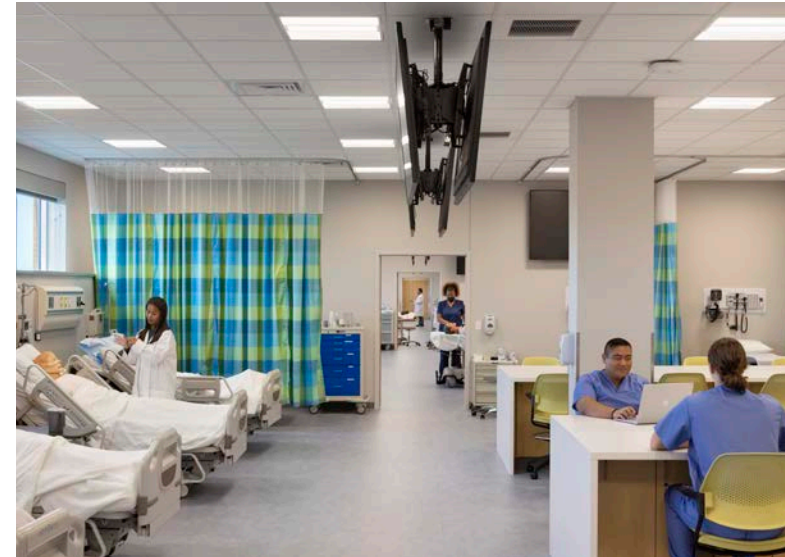
Our clients are passionate about improving lives.

They are educators training tomorrow's leaders, biotech firms seeking cures, healthcare providers caring for old and young, and civic, cultural, corporate, and non-profit organizations serving communities.

Our client's mission is our mission, and we strive every day to create a better future together.







## Southern Connecticut State University Health & Human Services Building

Serving as the new heart of SCSU's Health & Human Services program, the building consolidates eight campus-wide locations encompassing nearly two-dozen disciplines, uniting their academic centers, clinics, and institutes into one inviting, interdisciplinary experience.

With the central purpose of the facility to be a "teaching clinic", the design includes office and administration spaces, a nursing simulation learning center, nursing classrooms and teaching labs, clinical spaces, recreational therapy spaces, exercise science labs, and departmental space for several areas of study, such as communications disorders, marriage and family therapy, recreation, tourism and sports management, public health, social work, and exercise science.







## Yale University School of Nursing Simulation Lab

The Simulation Center Expansion is an innovative enhancement to the University's existing simulation program. The center now includes a standardized patient lab with digital capture and playback, and a home care lab that doubles as a psychiatric simulation lab.

As a result of the careful considerations and attention to the campus' integrity, the design team was able to create a high fidelity standardized patient area, allowing students the opportunity to be as close as they can to real world experience while still being in an educational setting that allows for close observation and critique.





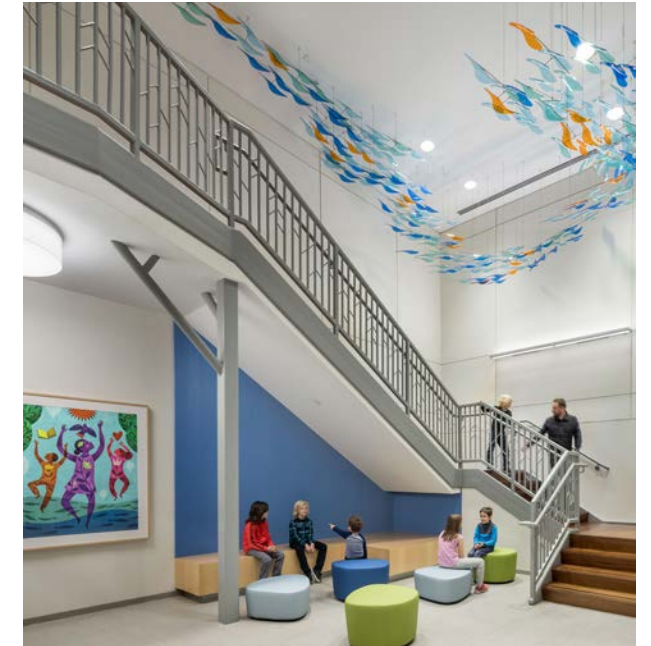


## Yale University School of Medicine: Child Study Center

Internationally recognized Yale Child Study Center needed a new centralized space to serve as a home for outpatient, behavioral health treatment and study. Previously located in three separate locations, bringing all the services under one roof was a challenge. Programming workshops played a vital role in determining the team's holistic vision which was to create a biophilic atmosphere for staff, caregivers, and children while prioritizing patient privacy.

Features of the space include 80-plus clinical offices, reception areas, smaller themed, waiting rooms, wayfinding/orientation, conference rooms, private offices, workstations, huddle room, and a large breakroom.

This building is not only more user friendly for patients and their families, but it successfully creates a supportive research and work environment that promotes collaboration and cross-pollination of ideas.







## Yale School of Medicine Administration

Through our continued relationship with Yale University, Svigals + Partners revived a former AT&T building into Yale School of Medicine's new administrative facility serving 500 staff members. This LEED Silver project had an extremely fast design, documentation, and construction schedule despite the challenges of bringing multiple departments under the same roof for the first time. An extensive programming study was required to understand each department's needs, work processes, and requirements. In combination with our already strong understanding of YSM's standards and properties, the findings were woven together to create a new, open work pedagogy intended to inform all of Yale's work environments for years to come.







## UCONN Health Center Clinical Building

In partnership with Architectural Resources Cambridge (Architect of Record), Svigals completed a major renovation of the University of Connecticut Health Center's Clinic Building.

Funded as part of the CT Bio-Science Initiative, plans included major renovation/expansion of the Dental and Cardiology Clinics, new clinics for Pulmonology, Nephrology, and clinical research as well as renovations to the clinical laboratories and hospital pharmacy. A Master Plan for renovating the entire facility was developed at the start of the project to guide implementation of the initial work in concert with the client's overall vision for the building. Only having enough funding to renovate half of the facility and the need to occupy the building during construction, the renovation required tight collaboration with the design engineers and UCONN Health Facilities staff.



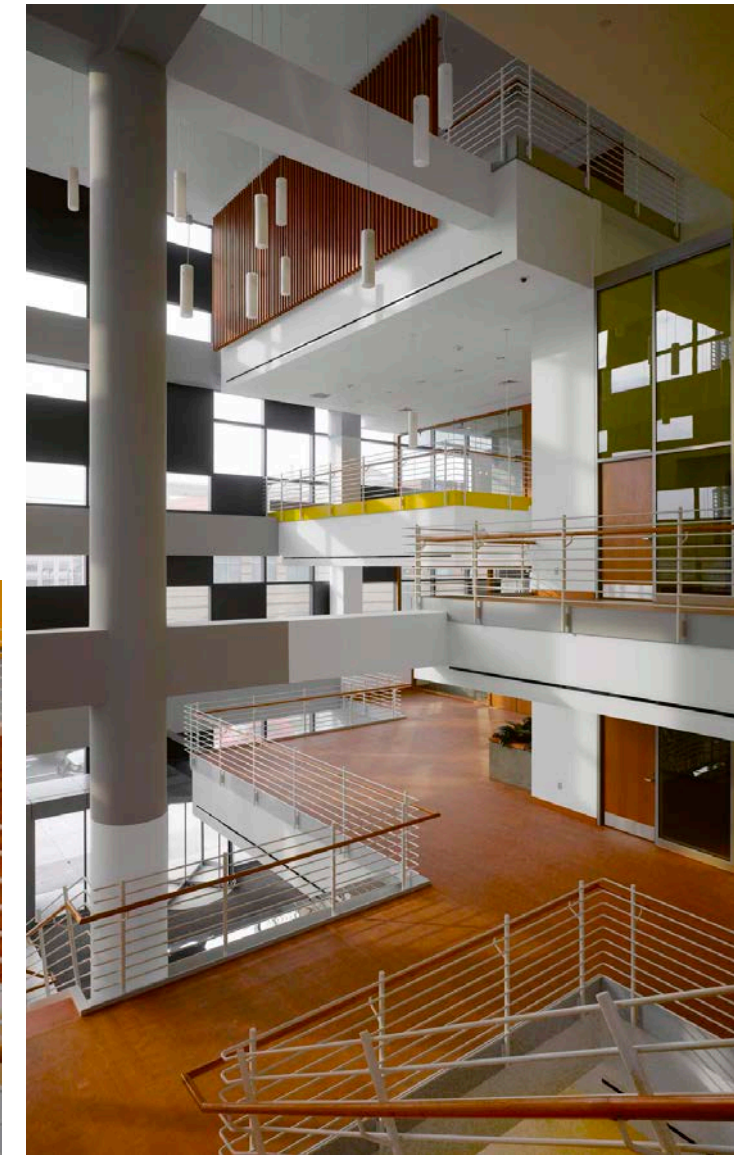
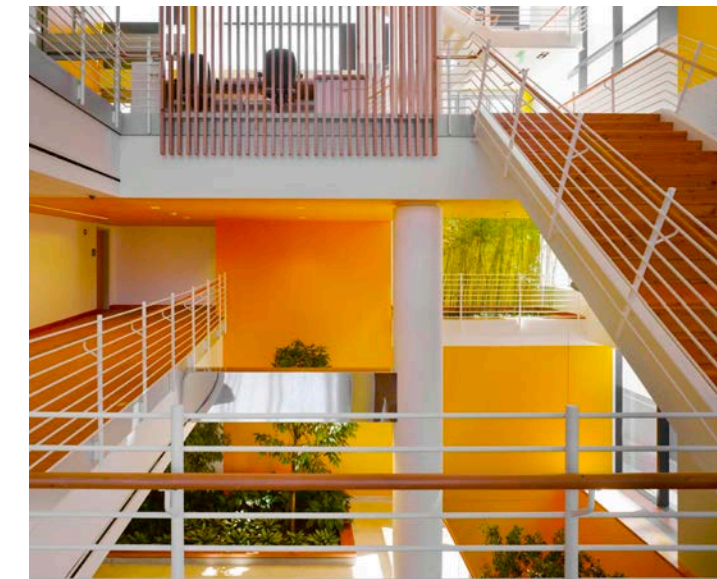




## Park Street Clinical Laboratory Building

This multi-use facility's program includes: four floors of clinical laboratory space, blood bank, pharmacy, administrative offices, ground floor retail, hospital auditorium and primary loading dock for the entire hospital. Most importantly, it needed to provide a transitional space between the hospital, adjacent 2,000 car garage, clinical laboratories and the public realm.

By organizing the building around an atrium, the facility is anchored to the site and actively engages the community. The polychrome of the exterior façade gives way to a calm interior that features a light-filled garden atrium. Accessible and inviting, the internal garden will provide welcome respite year-round offering a soothing transition between all program elements, particularly for the patients.







## UCONN David C. Phillips Communications Sciences Building fMRI Clinic

Svigals + Partners was commissioned by UCONN for the installation of a new fMRI suite that would lead research opportunities, new collaborations and external funding opportunities for the University. A preliminary study of several sites was conducted to determine the best location.

The project consists of 4,500 s.f. of demolition/renovations to existing laboratories, clinical spaces, offices, classrooms and storage functions into a state-of-the-art functional magnetic resonance imaging suite for behavioral research. In addition to the fMRI scanner and equipment, the program for this project includes offices, behavioral testing, EEG testing, data processing, and various support spaces required for this multi-departmental shared facility. The scope also includes the design of radio frequency and magnetic shielding systems along with the coordination of the MRI equipment.

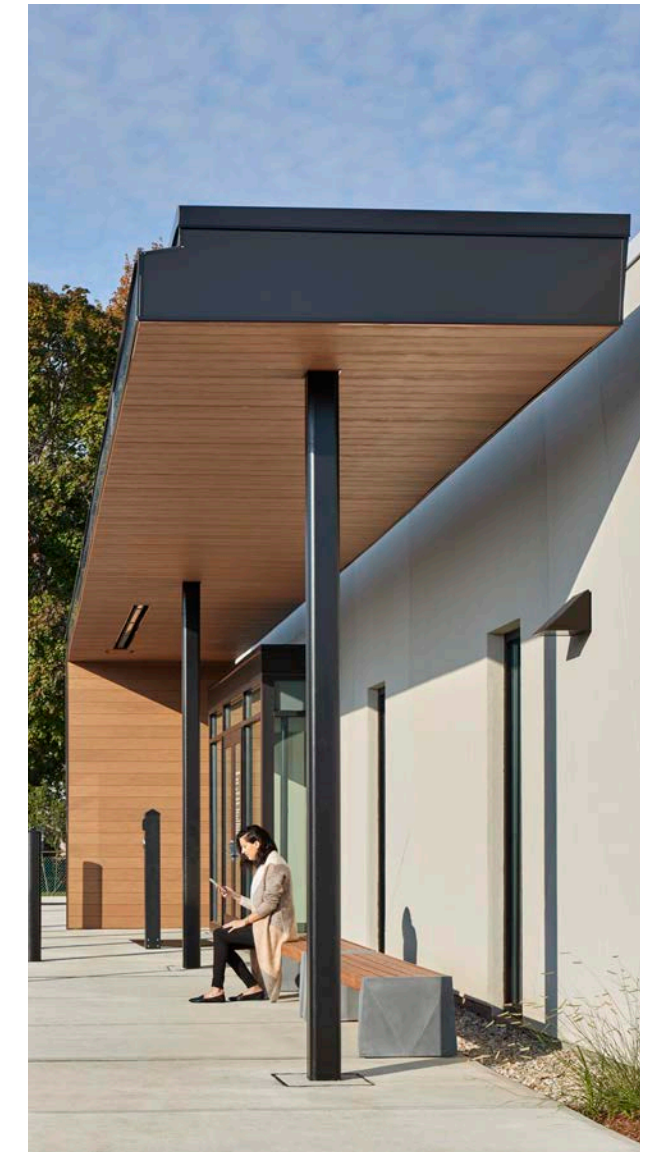
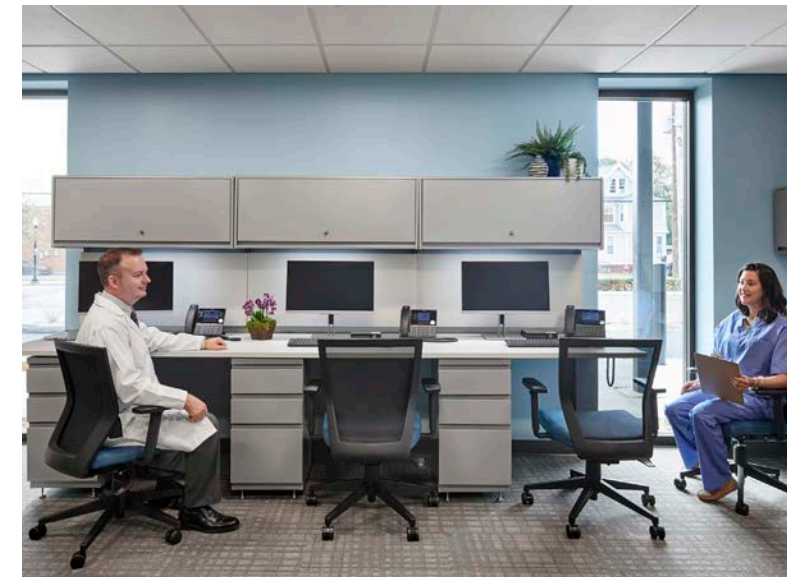






## Cornell Scott-Hill Health Center: West Haven Clinic

The project represents the latest in an ongoing collaboration between Svigals + Partners and Cornell Scott-Hill Health Center totaling eight projects to-date. Set behind a desolate parking lot, the West Haven community's familiarity with the building as a former funeral home presented challenges. To usher in a new welcoming tone, S+P sought to transform both the exterior and the interior while remaining cognizant of economical constraints.







## Continuum of Care Headquarters

Serving the most underserved population in need of home care, Continuum now has a home for themselves, bringing together over a dozen separate office locations under one roof.

To begin the process, the design team gathered and listened to client stories of the nurturing support they were receiving from Continuum. Learning that came from the clients' experiences inspired the concept of "rebuilding lives," which became the guiding principle for the design.

The result was a new headquarters grounded in the concept of home - including a two-story reception area, administrative offices, conference rooms, space for staff training, and a café with patio and its own separate entrance.

Svigals designed original laser-cut metal artwork to further celebrate the essence of home and community. This imagery was so successful and inspiring that it fostered a subsequent rebranding effort for all of the Continuum brand of services and facilities. The building's design provides a generous, authentic environment that supports the care this vulnerable population needs and deserves.







## Ronald McDonald House of Connecticut

Biophilic design informs the new home for families of children undergoing serious medical treatment. Providing an environment of comfort and repose across the street from Yale New Haven Children's Hospital, it creates a private, natural setting in an urban context.

Sculptural caryatids on the building come from an ancient tradition which offers a way for the human dimension to inhabit the architecture. In this way, the story of families being together is told through the architecture itself, integrated with the structure of the building, their story, their building, their home.

Families under great duress will have a home that in every detail aims to care for them as they wish to care for their children. The variety of places to be alone or with other family members is influenced by the warm and open presence of nature.

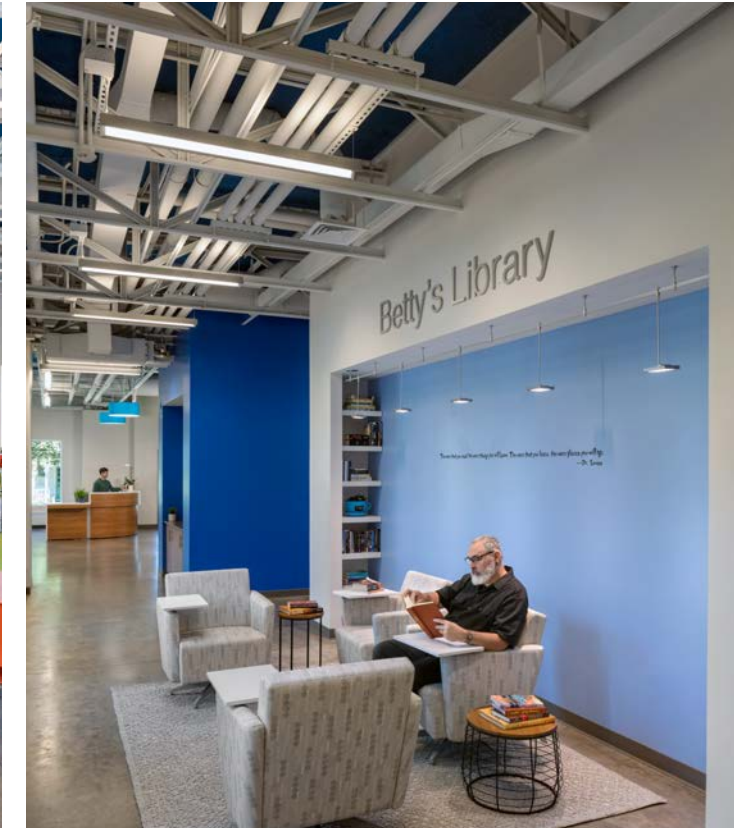
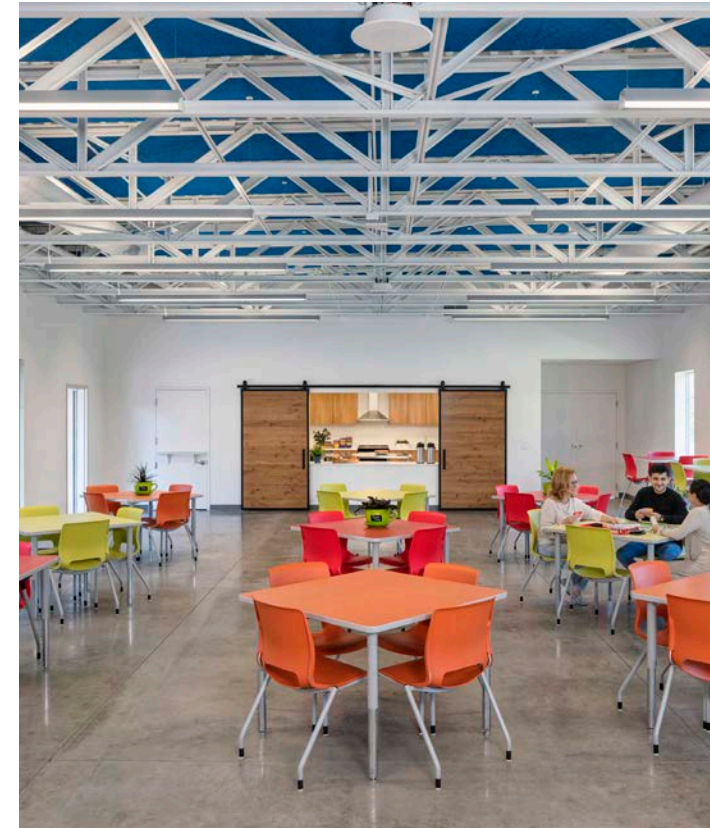






## Community Mental Health Affiliates: Community Center

The 10,000 SF building needed to be fully reimagined in order to maximize a tight budget. The new Community Center support space operated by Community Mental Health Affiliates provides individuals in recovery from mental health and/or substance use a safe environment for activities and socializing. Members can build their social skills by attending groups, community activities, advocacy events, and one-on-one meetings with social club staff.







## Cornell Scott-Hill Health Center: Recovery & Wellness Center

The Recovery Wellness Center will provide a new home for Cornell Scott-Hill Health Center, expanding on their current network of Community Healthcare services in New Haven. This new facility will offer medical and psychiatric services on an out-patient basis, as well as provide shelter for patients in need of a place to stay while being treated. Together, these services will provide a holistic care in a calming environment.

The new building's site was strategically chosen to create a campus for CSHHC expanding an entire city block. Located adjacent to an existing CSHHC facility, staff from each building are able to support one another, with the goal to create cohesive and flexible delivery of recovery services. Preliminary studies for the building configuration and site design included examining how to provide access from the street and the driveway behind (one story below), circulation around and in-between the buildings, and locating an outdoor space for residents.

The Recovery Wellness Center will house a Reception and Waiting Area, Exam, Treatment and Interview Rooms, Patient Intake and Testing Spaces, Group Rooms, Offices, Bedrooms, a Cafeteria, and Lounge/Library and Training Rooms for its residents. The design emerged from the idea of layering, to align with the varied approaches to one's healing. Our goal was to elevate the concept of the shelter to empower healing, while creating a safe space for residents and caregivers alike.







## Yale University W-AOS Aesthetics Center

The 15,000 square foot building is being transformed from a typical office space to a clinical facility housing medical and surgical dermatology. The program includes 12 exam rooms, 12 MOHS and Laser procedure rooms, a MOHS lab, clinical and administrative support. The project also includes a new building addition entry with new elevator, vertical circulation, and waiting area.

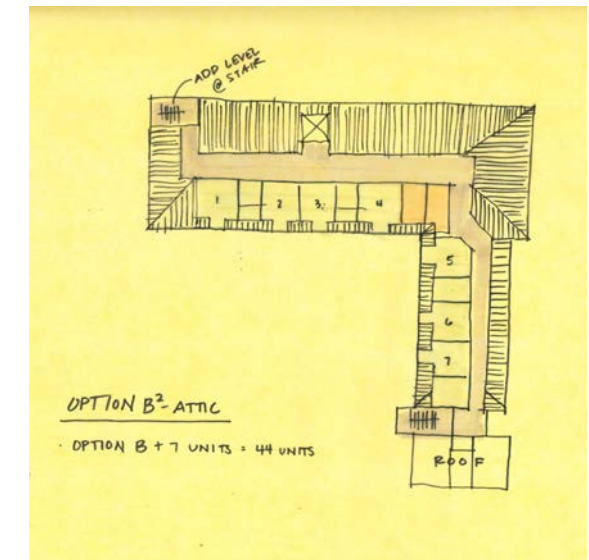
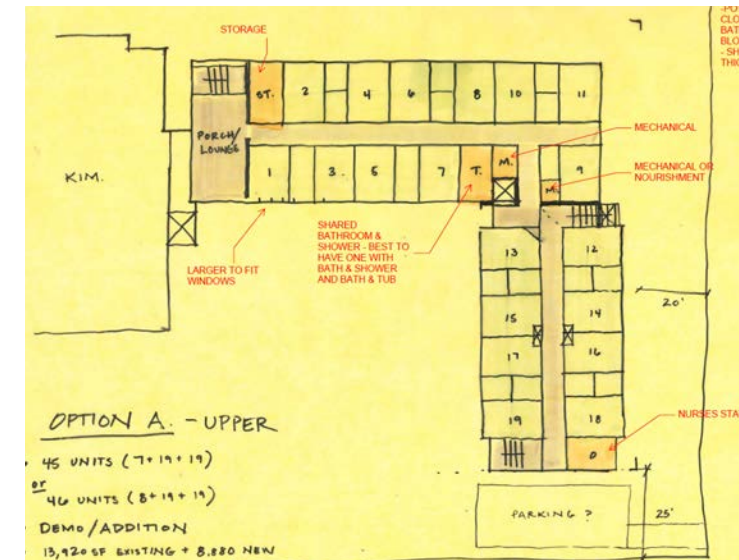
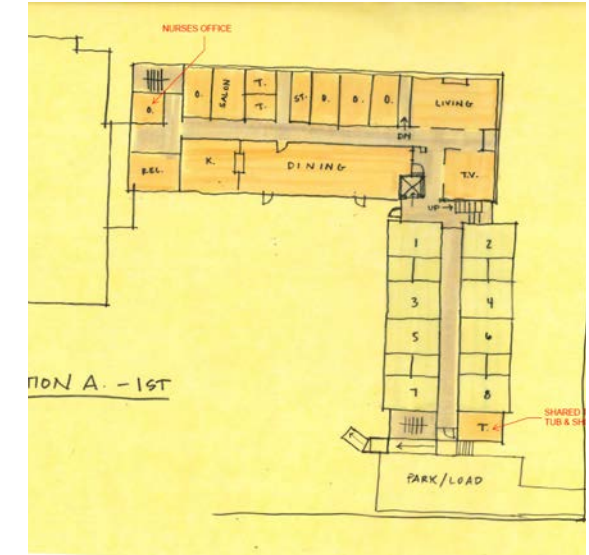






## Mary Wade Home Boardman Residence

The Mary Wade Home Boardman Residence is a senior living community in New Haven offering quality care in a vibrant environment. The project entails recommending renovation options and amenity upgrades for the brick colonial revival building, originally built in 1873. It is a significant historical and architectural landmark within the community and the oldest of Mary Wade's campus of facilities. The Boardman Home serves 45 elderly assisted living residents that range in age from 62 to 104.











## Quantum-Si Inc. Branford Expansion

Consolidating two prior facilities into a single, technologically advanced research base, protein sequencing company Quantum-Si Inc. turned to Svigals + Partners to design a new headquarters that merged the firm's technical edge and crisp style with engaging art, branding, and collaborative work opportunities.

Working with QSI's facility team on a tight schedule, the new headquarters accommodates sensitive, cutting-edge equipment for both wet and dry laboratories, while serving as a springboard for Quantum-Si's anticipated growth trajectory. The open interiors present a healthy, easy-to-adapt environment equipped with key conveniences and safety features, from flexible lab benches and adjustable lighting systems to highly efficient fume hoods and mechanical systems.

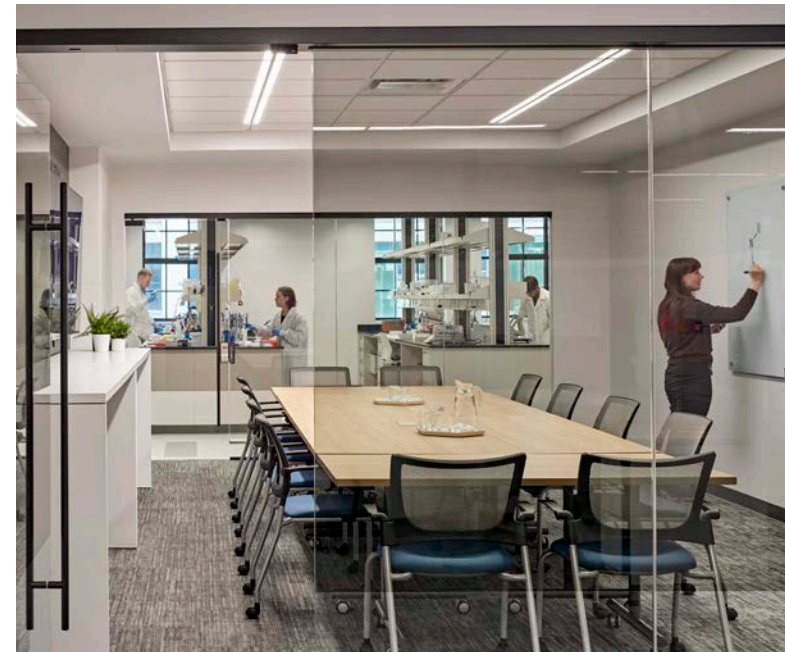






## Halda Therapeutics

Occupying the ground floor of the former Winchester Arms factory originally built in the late 19th century, a new laboratory and workplace for research-stage drug discovery company Halda Therapeutics prizes both openness and innovation. Designed for collaboration, the office accommodates 24 employees, and includes a laboratory with 40 wet benches, private offices, huddle spaces, a breakroom, and a glass-enclosed conference room. Glass partitions spanning the length of the headquarters reveal R&D work inside. This transparency is enabled by a unique image-obscuring film placed in sensitive locations, including the full-height glazed enclosure of the conference room.







## Alexion Pharmaceuticals

Over several years and multiple projects, S+P has designed and upgraded this global biopharmaceutical's Center of Excellence to accommodate their changing needs, reflect their commitment to excellence, and create transformative spaces that align with the company's innovative mission. Through collaborative visioning sessions, S+P helped the company prioritize their needs and goals, including expanding lab space, creating flexibility, and showcasing their brand. The introduction of creative elements and unique amenities, such as a tech bar, company store, and a planned roof top canopy, underscores the value Alexion places on its team members and spirit of innovation.

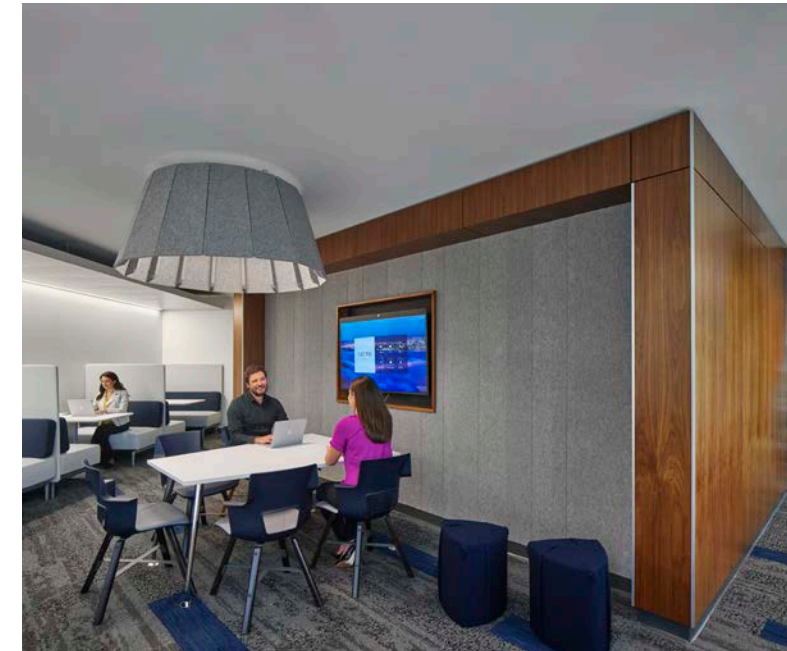






## Biohaven Pharmaceuticals

For both their New Haven headquarters and their mid-Atlantic expansion, S+P brought this innovative company's brand to life for their highly mobile workforce. Designed for individual, group, and leadership functions, Biohaven's environment artfully articulates its bold, rapid-response nature in elements including a sculptural "communicating stair" connecting floors, and custom perforated panels that relate the office to each other. Designed to be flexible and dynamic, the stunning results feature a wide variety of workstations, conference rooms, an expandable training center, pantries, and casual spaces that create vibrant settings for innovation and leadership.

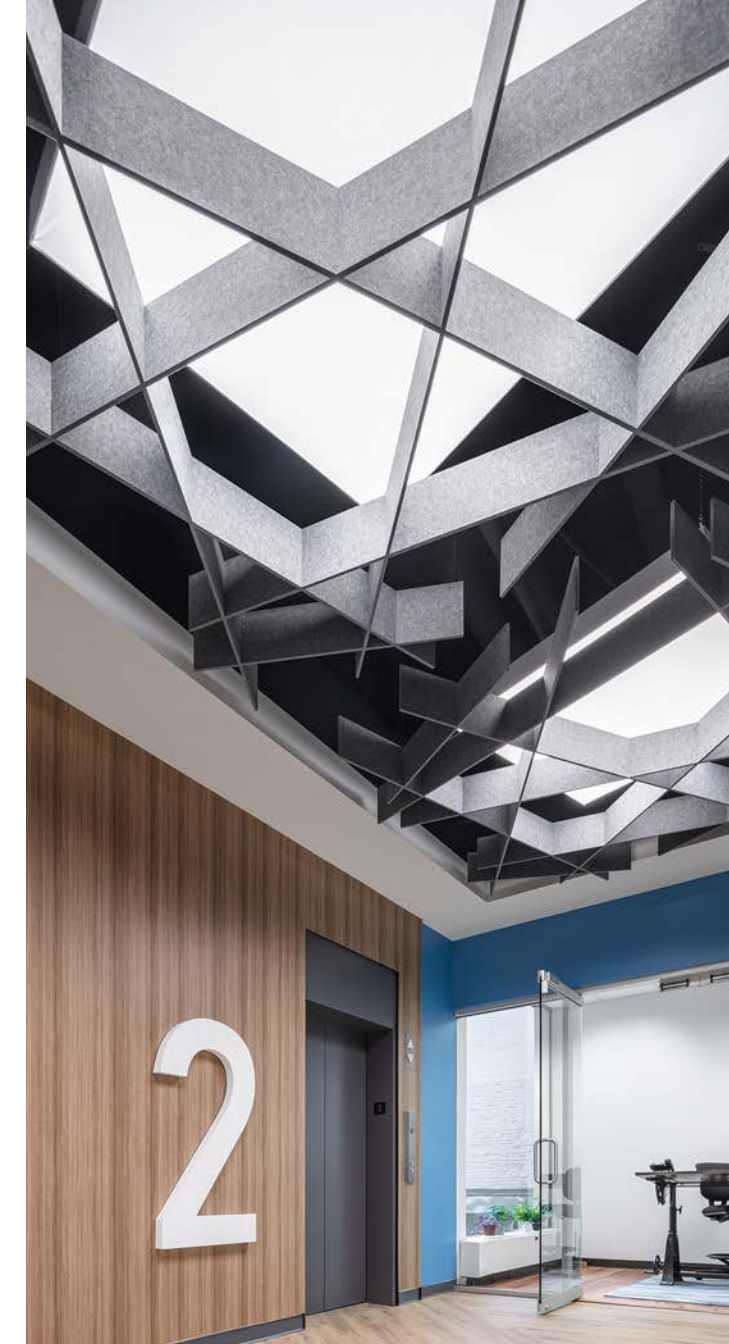






## Elm City Bioscience Center

Located in the heart of downtown New Haven, Svigals + Partners has revitalized this underutilized office building into a vital biotech hub. Accommodating fast-growing companies in the sector, the design team maximized each floor's usable space, ensuring the high efficiency of the building's utilities and related equipment while providing flexible layout options that can be readily adjusted to suit each tenant's lab, research, and office needs without requiring large scale renovations.

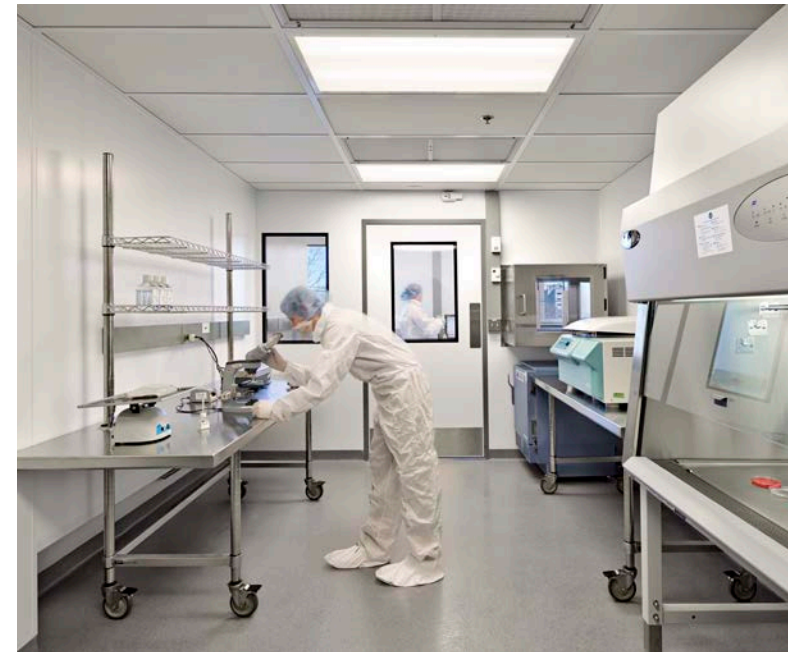






## Clean Rooms

Svigals + Partners has experience in designing controlled environments for research, manufacturing, pharmaceuticals, biotech, medical device and life sciences purposes. The S+P team brings an in-depth understanding of the building systems, codes, regulations, equipment, and technological trends necessary to complete intense clean room construction/renovation projects of varying classifications.





## Clients Are Saying

“**BEYOND** my expectations.”

“I’m **THRILLED** with the design.”

“Svigals has **NO COMPETITION**  
in terms of *creativity and collaboration.*”

“The process of **COLLABORATION** was outstanding.”

*“Our Svigals project is our crown jewel.”*

“Svigals cares about the  
project, the client, and  
meeting client needs.  
**That shows.”**

“FANTASTIC IN REACHING CONSENSUS”

*“Just the right amount of weird.”*

“All architects think about the end-user first, but  
Svigals **THINKS OF THE CLIENTS** too.”

“Not your typical  
architect. **NOTHING**  
**COOKIE-CUTTER.**”

“**NO CLASHING**  
which has  
happened with other  
architectural firms.”







SVIGALS + PARTNERS

84 Orange Street  
New Haven, CT 06510

203.786.5110  
svigals.com

4075 Wilson Boulevard, 8th Floor  
Arlington, VA 22203

202.870.4550

100 SE 3rd Avenue, Suite 1000  
Fort Lauderdale, FL 33394

954.498.3826