



+ Art & Branding

SVIGALS + PARTNERS

Dream. Think. Do. Together.

We are Svigals + Partners, an award-winning architecture and art integration firm imagining a better future. We share with our clients a commitment to improving lives in education, science-tech, healthcare, and community-building. At the heart of our practice is the seamless blending of architecture, art, and storytelling designed to create experiences that nourish life. Our most successful projects emerge from close collaboration, and we hold dearly the belief all of us are smarter than any one of us.



OUR VISION:

A compassionate world inspired to create a better future together.

OUR MISSION:

To design artful solutions with passion and purpose, enriched by meaningful collaboration.

“Our Svigals project is our **Crown Jewel**”

2023 **Fast Company Innovation by Design Award** Finalist | Learning Category
2022 **CREW CT Social Impact Award**



2021 **Chicago Athenaeum American Architecture Award**
2021 **Interior Design Magazine Best of Year Award**
2021 **AIA CT Design Award** ... *to name just a few*

1983 ESTABLISHED
85% REPEAT CLIENTS
75+ INDUSTRY AWARDS

03 LOCATIONS
CT, DC, FL
LICENSED IN
12 STATES

**WORLD'S TOP 10
MOST INNOVATIVE
COMPANIES IN ARCHITECTURE
AS NAMED BY FAST COMPANY**

CONNECTICUT CERTIFIED
SMALL BUSINESS ENTERPRISE

2021 Recipient of the Greater
New Haven Chamber of Commerce
**Equity & Inclusive
Opportunity Award**

PARTNERS

Jay Brotman, AIA
Bob Skolozdra, AIA, LEED AP
Chris Bockstael, AIA
Doug Lovegren, AIA

28 STAFF MEMBERS

12 LICENSED ARCHITECTS

03 LEED AP CERTIFIED

02 WELL AP CERTIFIED

03 NCIDQ CERTIFIED
INTERIOR DESIGNERS

Civic-Cultural + Education + Healthcare
+ Mixed-Use/Residential + Science-Technology + Workplace

Our Team

Svigals + Partners nurtures a creative, collaborative spirit. We believe in multi-functional teams working together to support shared knowledge, problem solving, learning, and risk taking. Ours is an open environment where people feel valued, heard, and connected to a larger purpose -- resulting in greater creativity and innovation.

We believe this team culture works in harmony with individuals developing chosen areas of expertise. As such, we have committed leaders for sustainability, technology, quality control, graphic design, and equity/diversity, among other disciplines.

Together, we form a whole. We practice gratitude and respect. We value asking over telling. Wondering over knowing. Let us share our experience with you creating the community to which we all aspire.



Marissa Mead, AIA, LEED AP | Director of Art Integration

Marissa has contributed as an artist and architect to more than 100 projects at Svigals + Partners. Among the first in the industry to hold the title of Director of Art Integration, Marissa leads the strategic Integration of Art within Architecture across the firm's portfolio, developing custom branding elements, architectural art, and sculptural installations that enhance identity and create a sense of place. In 2019, two of Marissa's projects received national recognition, and in 2020, Marissa was named to Connecticut Magazine's prestigious 40 Under 40 list.

Our Clients

Our clients are passionate about improving lives.

Whether they are biotech firms seeking cures, medtech firms advancing technology, healthcare providers caring for old and young, educators training tomorrow's leaders, or civic, cultural, corporate, and non-profit organizations serving communities -- they all have the mission of improving lives in common.

In their pursuit of an architecture partner, they value expertise, personalized service, and access. We deliver.



Our Work

Svigals + Partners was founded to create environments where life is nourished by the experience of the architecture. At the heart of our practice is art integration – the seamless blending of architecture, art, and storytelling. Art has always been an essential part of human culture, and experiencing art calls us to the humanity we share. By incorporating art into architecture, we create a resonance that binds community together, inspiring all to be their best selves.

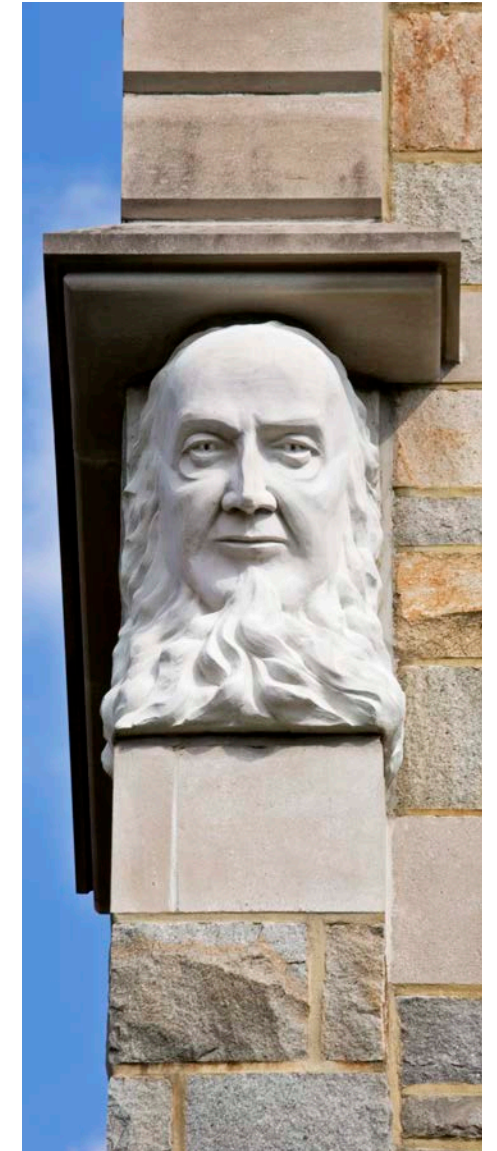
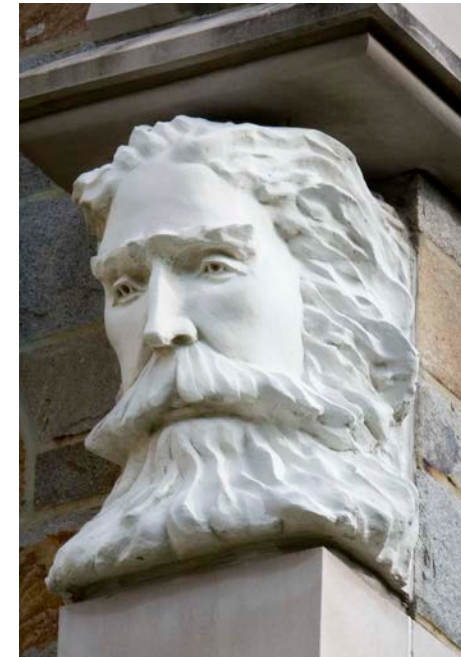
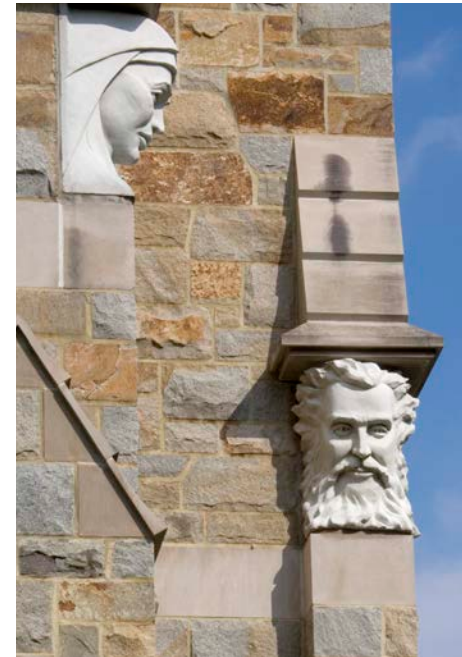
We start with a unique creative engagement process designed to understand your organization's mission and vision. Our workshops gather all stakeholders giving everyone a voice. Discussions and activities illuminate themes which are integrated, creatively and strategically, into the project's design at its earliest stages. This approach allows for every aspect of architecture to contribute in a meaningful way to the unique nature of each place and each community.





Boston College

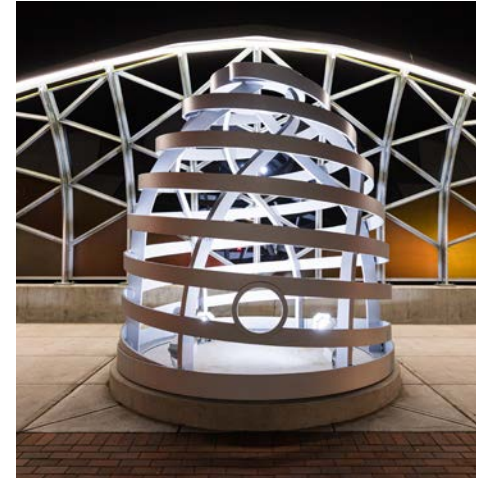
Seeing the power of existing resources is the most sustainable approach. Drawing upon the quality of nearby older architecture, the transformation of Carroll School of Management, Fulton Hall brought a more modest building back into the family of the proximate buildings. New additions included an atrium which provided a heart to inspire the relationships among disparate departments which had previously been segregated. Drawing upon the tradition of figurative sculpture in Gothic architecture, portrayals of the saints appear as capitals to the structural pilasters around the building, acting as both a metaphoric and literal support to the life of the School. A single project can have an exponential effect if it draws upon existing campus forces of both architecture and program. A building was renovated, an academic community enlivened and a campus renewed in the transformation of Fulton Hall.





New Britain Beehive Bridge

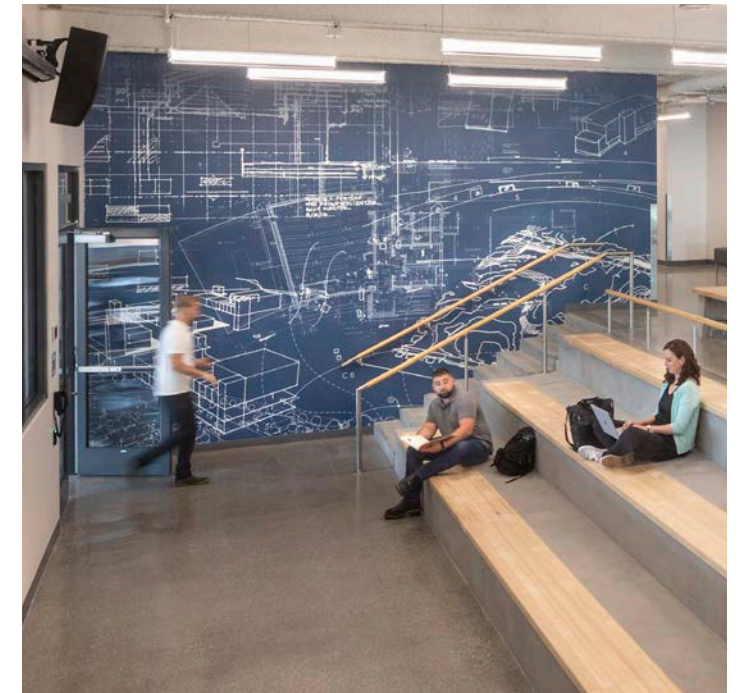
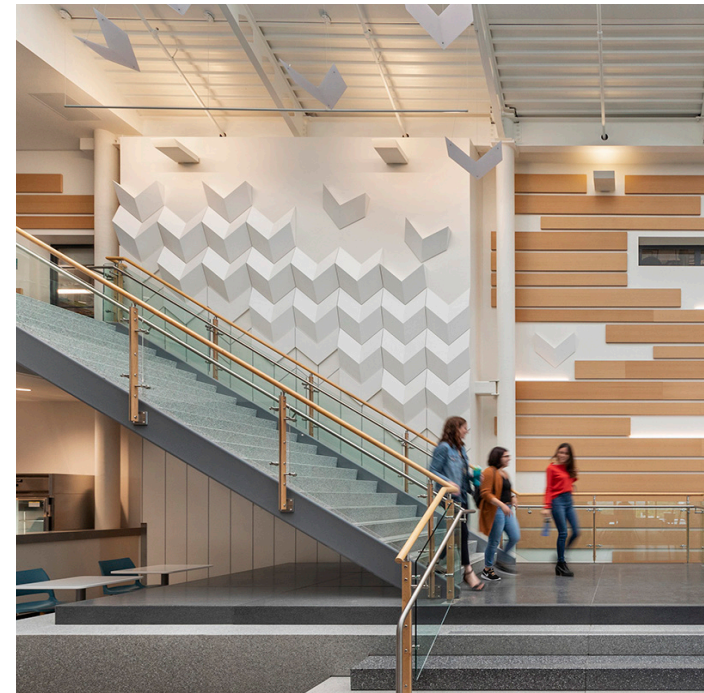
The Beehive Bridge was designed to bring light, life, and reconnection to downtown New Britain. Through broad-level participation, a great number of passionate people contributed to defining aspirations and reviewing concepts during public input sessions and steering committee meetings. Integrated artwork was considered critical to the project's success. Sweeping illuminated railings, four whimsical bees and a metal hive sculpture celebrate the City's industrial history and also highlight New Britain's status as a growing center for the arts in a bright and forward-looking way. The result is an adaptive reuse bridge that provides a memorable experience for the people of New Britain, along with the rest of Connecticut.





University of New Haven, Bergami Center

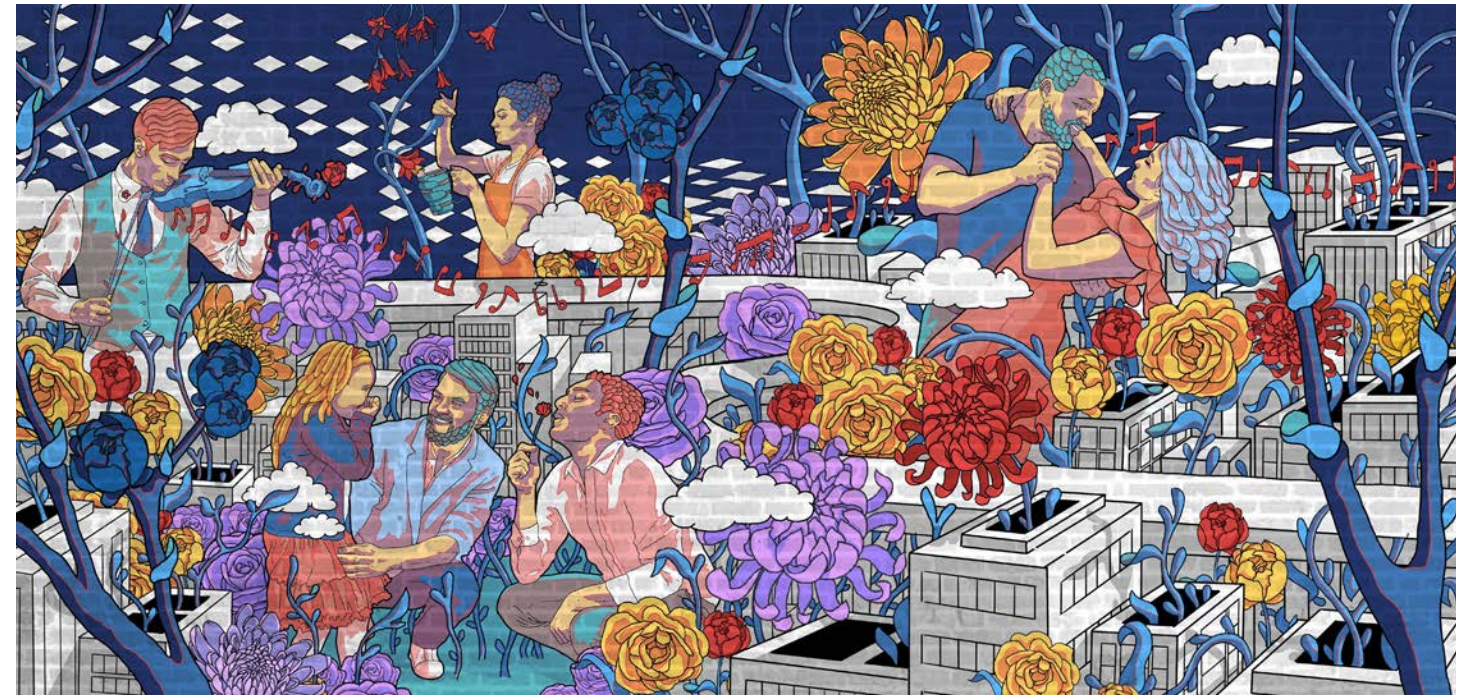
Situated at the newly created heart of the campus, the evocative and integrated design of the Bergami Center was designed to foster an innovative spirit throughout the University community by inviting students across all majors to collaborate, conceive, and create. Thematic artwork in the atrium, building corridors, and an exterior terrace highlight the interdisciplinary pursuit of science, technology, and innovation. The installations evoke a sense of transformation showcasing the process by which ideas and hypotheses evolve from concepts, to experiments, to solutions. One of the finest learning facilities in the country, the Bergami Center embodies the University's commitment to preparing the next generation of leaders and problem solvers in careers of the future.





Ninth Square New Haven Mural

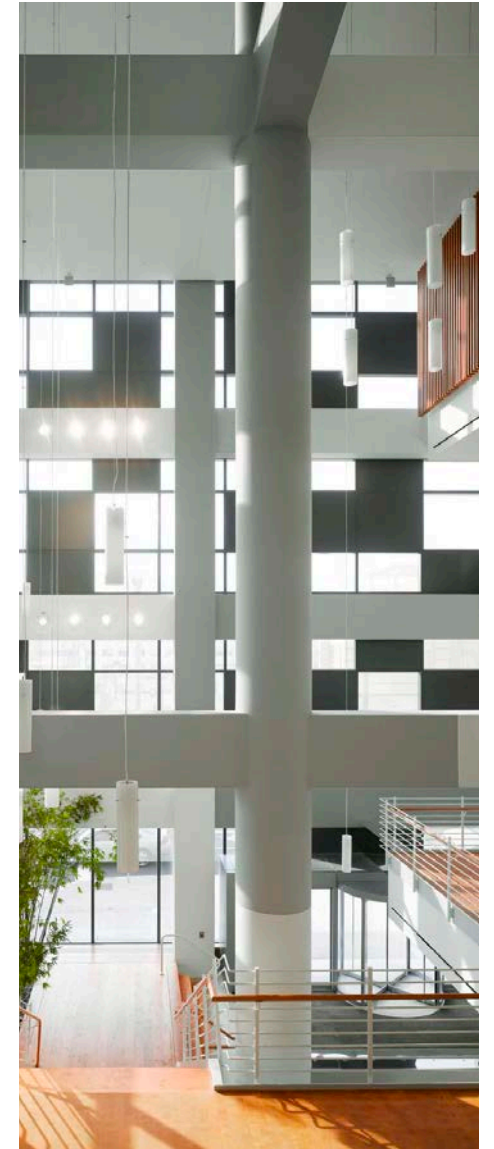
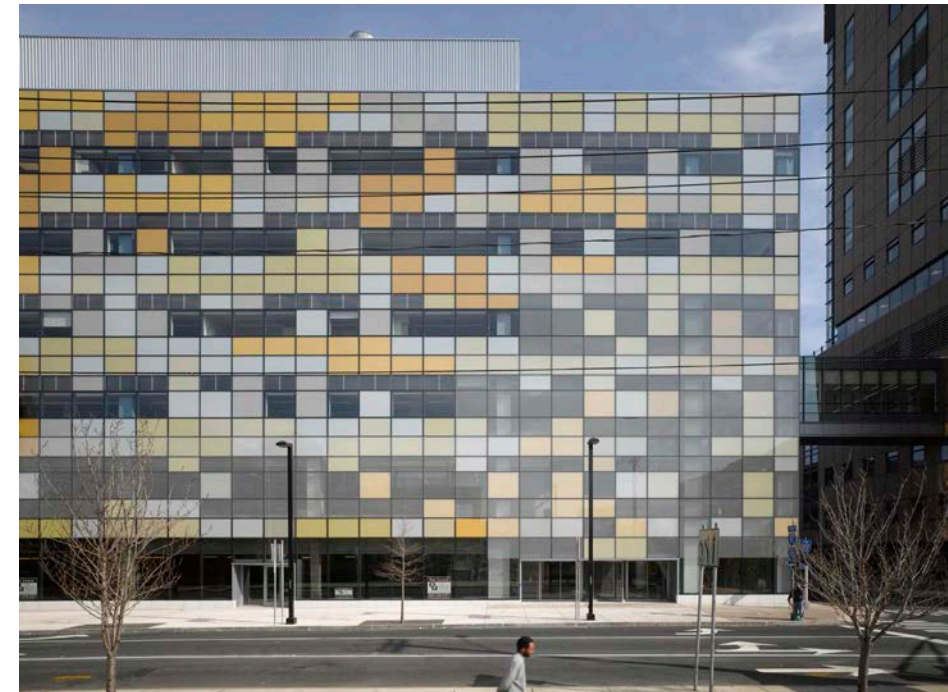
Through Straight Up Art, a Town Green District program, Svigals was selected through a proposal process to design and lead community volunteers in the transformation of a non-descript brick wall into an exciting public art project. By asking those that live and work in the neighborhood to share a few words of what Ninth Square means to them, four themes were highlighted: Community, History, Culture, and Heart. Those themes celebrate the circle of influence between The City and this unique neighborhood. The mural is a lively, colorful, and exciting homage to New Haven's original urban plan and an acknowledgement of the ever-changing landscape of this Square and this City. The design captures movement, possibility, love, and hope in a way that is both relatable and beautiful. Bringing it to life was a memorable opportunity for neighbors to come together, meet, and celebrate their community.





Yale-New Haven Hospital at 55 Park Street

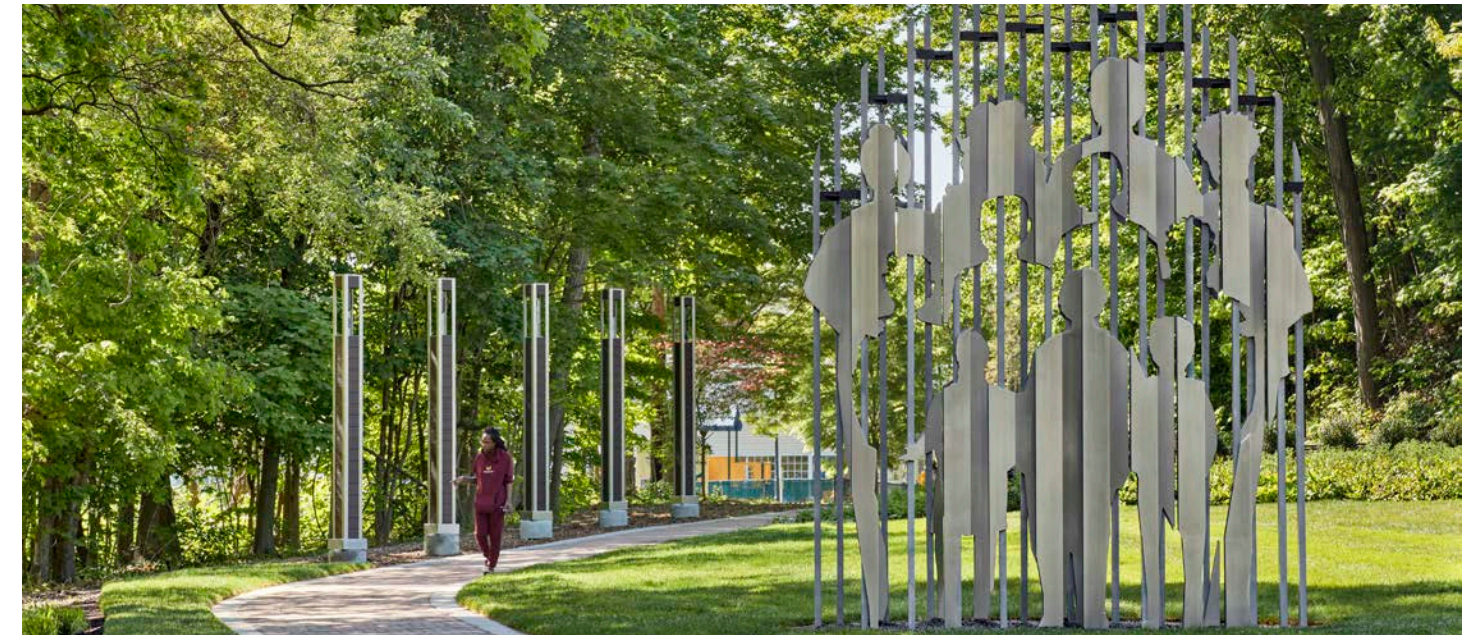
There is a healing power to architecture which reminds inhabitants of our relationship to the natural world, especially in an urban environment. This dimension is even more important when considering the patients and families of life-threatening diseases who need their spirits uplifted. Such was the aim of this facility. The City, the developer, the users, and the community were brought together in a process of creative engagement where each could be heard. The process created a design that expressed aspirations of many diverse influences from the need to knit the city fabric together to technical requirements to the families and friends going to the Cancer Center. The biophilic design not only connected the inhabitants to nature; it also connected them to each other.





The Botanical Garden of Healing

A place for families to honor and celebrate loved ones, this memorial garden aims to raise awareness of the impact of gun deaths and inspire leaders and communities to take action. Families shared personal stories of loss, grief, and struggle, as well as their paths to recovery and hope in a collaborative visioning process designed to develop concepts for the memorial. The central sculpture depicts a collage of figures, with some depicted by voids – illustrating the sense of absence when loved ones are lost to tragedy. This serves as a reminder of both the fragility and strength inherent within the family unit and the community. The design for the memorial garden provides a path embedded with engraved stone pavers for visitors to walk the site, as ambient sounds from a row of lamppost wind chimes mask traffic noise. Arriving at a serene circular garden with flowering plantings and wood benches, visitors remember loved ones among memory tiles laid into a stone wall carrying phrases shared by New Haven families.





Albertus Magnus College

Building upon and enhancing existing campus resources, the newly expanded Tagliatela Academic Center exponentially increases the value of this investment while bringing the campus together and providing much needed program space. The multi-disciplinary purpose of this building unifies the full spectrum of academic inquiry from business to science to art. The caryatid sculpture of Albert the Great reawakens the inspiration of his life and his work, bringing it forward again eight centuries later and giving current students a new sense of meaning. The College has been reunited and the mission reenergized by building upon what was already there. Every building benefited, every program revitalized in its resonance.





Christopher Columbus School

A neighborhood was transformed and a community energized by the creation of this elementary school. Operating around the clock and serving multiple constituencies, it is a true community resource with spaces created for the community both inside and around the building. As the design team worked with teachers, art and science came together with the students sculpting on the facade weather patterns inspired by the wind and water currents. Drawing upon the theme of “the winds of discovery,” the artwork offered learning opportunities for all students. Resonating with the ecology of the city, strategies such as a new bus stop, sidewalk improvements, and utilization of facade grants leveraged the vibrancy of the new school to resuscitate the entire community.





College and Crown Apartments

Working with a developer who wished to leave a legacy of quality and meaning, we designed an architecture that met economic, functional, and aesthetic aspirations. Luxury amenities populate the interior, while sculptures at the city block corners are inspired by the signature elm trees that define New Haven. The irregularly-shaped vertical sculpture units fit together to evoke the branches of both the elm tree and the rivers of New Haven, the West, Mill and Quinnipiac. The leaf and river patterns are also reflected on the metal panels under the roof. The facade breathes new energy and purpose into an old neighborhood in a city steeped in history weaving building into the flow of the city. College and Crown offers an example of living in a city which can be both convenient and rewarding beyond the proximity to the workplace.





Yale Child Study Center

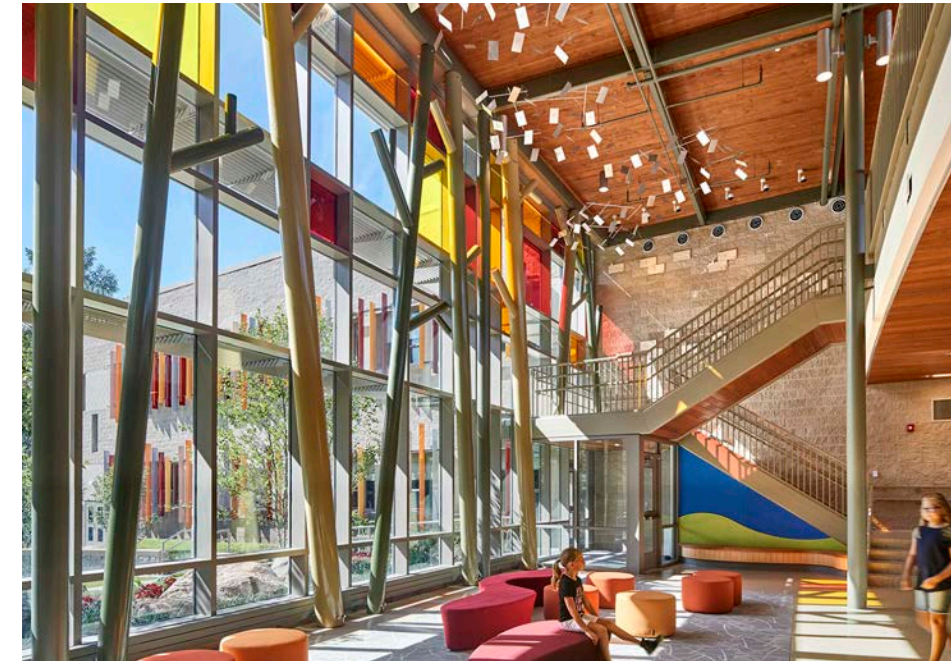
The internationally recognized Yale Child Study Center needed to consolidate multiple locations into a single, centralized space serving children with behavioral health needs. Using biophilic design principles, the new facility creates a welcoming and nurturing retreat for all who enter. Given the variety of users who would inhabit the space -- staff, caregivers, children and their families -- the engagement process was critical and rewarding. Unexpected architectural details and colorful art distinguish YCSC. Entering from the street, clients are welcomed by a double-height lobby and sculptural installation of fish -- putting visitors at ease and setting the tone for the experience ahead. YCSC's new home is not only user-friendly for patients and their families, it creates a supportive research and work environment that promotes collaboration and cross-pollination of ideas for this celebrated institution.





Sandy Hook School

The wholehearted participation of the community brought to life their vision of what was needed: a process of revitalization for all of Newtown and the creation of a plan with welcoming arms, embracing all the future students of Sandy Hook. Key to the success was establishment of a strong trust among participants, designers, and the community allowing expectations to fall away and the design of a new school to emerge unique to this site, the pedagogy, and this community. From our inclusive design process, we learned this neighborhood school emphasizes reading, writing, and nature supported by several activities involving the whole community. Design features serving this emphasis included the two “treehouse” break out areas, a reading “lawn” where story-time could be held outdoors; and an expansive two-story lobby and sweeping curved “main street” corridor that provide ample space for the annual book fair.





Continuum of Care Headquarters

Serving the most underserved population in need of home care, Continuum now has a home for themselves, bringing together over a dozen separate office locations under one roof. Their new headquarters is a symbol of caring for those in need. To learn more about the nonprofit, a gathering to tell stories of their work together surprised and touched everyone on the design team. The dialogue became the emotional heart of the design process. From these stories, sculptures and inscriptions were developed, reminders of the people served, the help provided, and the difference the organization makes in the lives of the Continuum community.

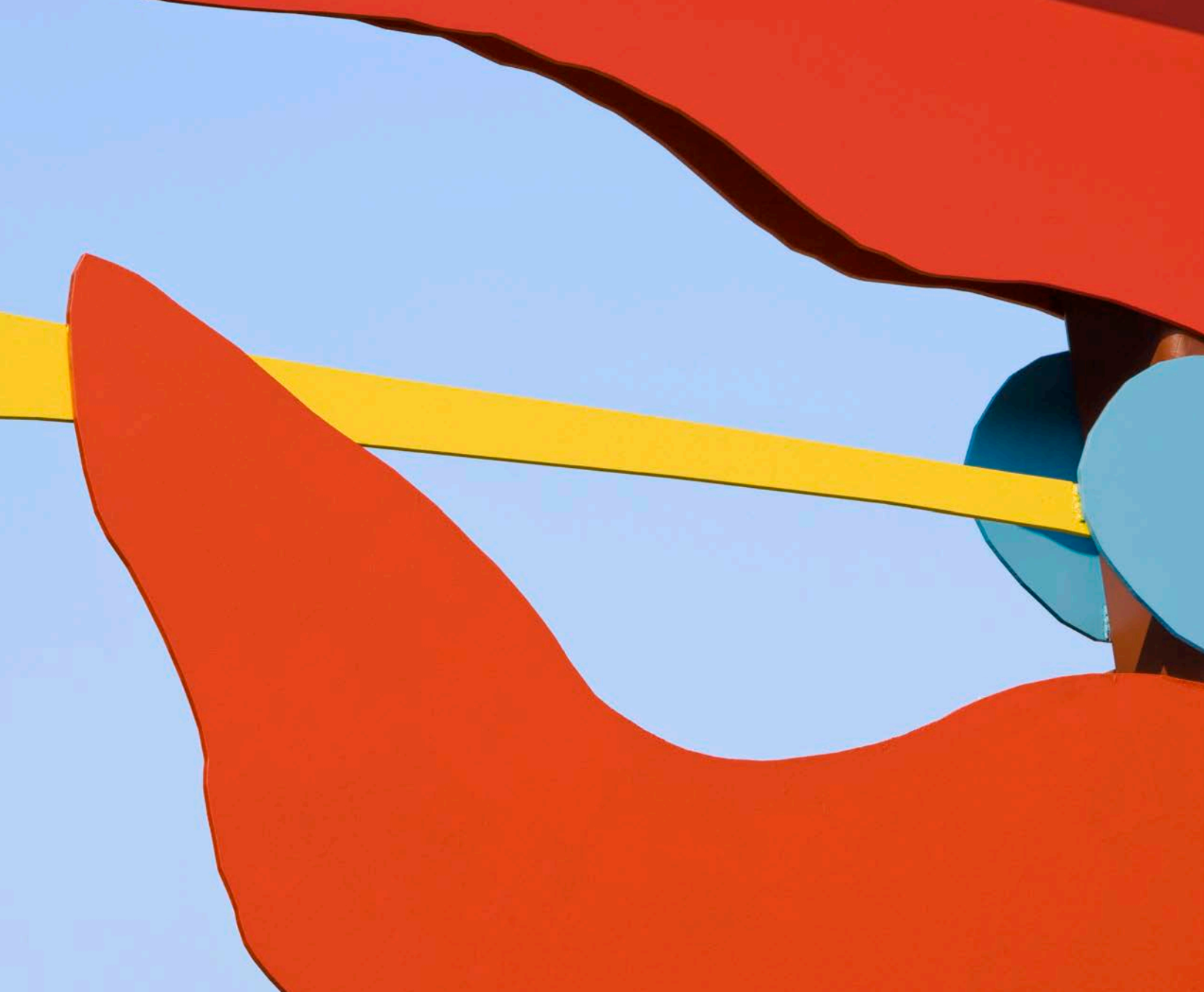


Materials

Every organization has its own unique story and culture. When that story is told in your environment, it creates an emotional connection with those who experience it. The result is a sense of pride and belonging that fosters affinity and loyalty.

We use a variety of methods and materials to tell your story and make it come alive through art. The final selection stems from creativity, passion, placemaking, teaching, architecture, and experience. But moreover, it stems from you.





Caryatids





Metal Sculptures







Branding & Signage





Murals

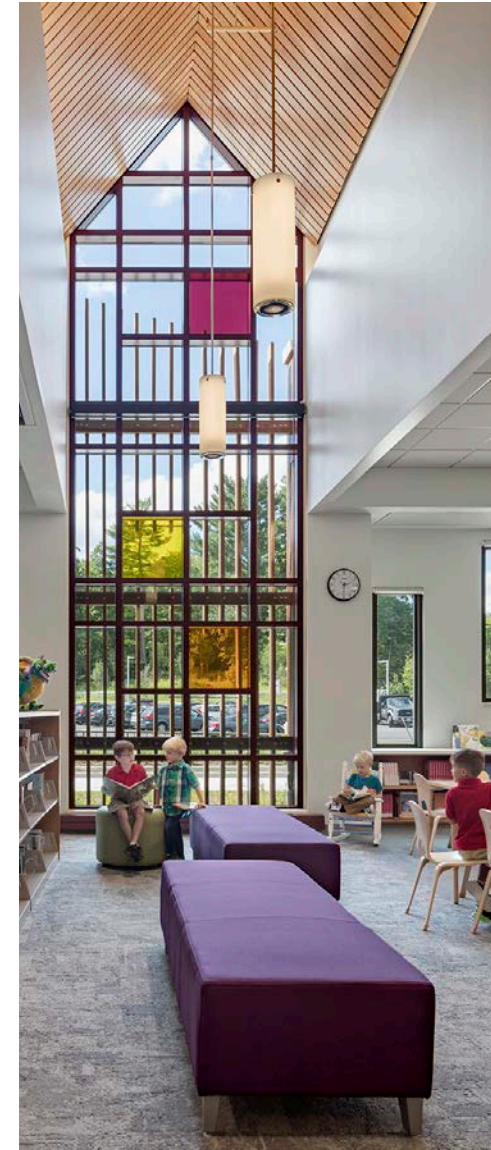


Relationships

We don't just build buildings; We build relationships. Thank you to all our clients, including:

Achillion Pharmaceuticals
Alexion Pharmaceuticals
Arvinas, Inc.
Beehive Bridge/City of New Britain
Biohaven Pharmaceuticals
Boston College
Columbia University
Cornell Scott-Hill Health Center
ESPN, Inc.
EvolvImmune Therapeutics, Inc.
Fairfield University
Halda Therapeutics
Hole in the Wall Gang Fund, Inc.
Massachusetts Institute of Technology
Metropolitan Museum of Art
PepsiCo, Inc.
Princeton University
Quantum Circuits, Inc.
Ronald McDonald House of Connecticut
Sandy Hook School/Newtown Public School District
Technolutions
The Simon Konover Company
University of Connecticut
University of New Haven
Wood Creek Capital Management
Yale University
Yale-New Haven Hospital

Keep us in mind for your architecture + art needs, and let's see what we can build together.



Clients Are Saying

“**BEYOND** my expectations.”

“I’m **THRILLED** with the design.”

“Svigals has **NO COMPETITION**
in terms of *creativity and collaboration*.”

“The process of **COLLABORATION** was outstanding.”

“Our Svigals project is our crown jewel.”

“Svigals cares about the
project, the client, and
meeting client needs.
That shows.”

“FANTASTIC IN REACHING CONSENSUS”

“Just the right amount of weird.”

“All architects think about the end-user first, but
Svigals **THINKS OF THE CLIENTS** too.”

“Not your typical
architect. **NOTHING**
COOKIE-CUTTER.”

“**NO CLASHING**
which has
happened with other
architectural firms.”





SVIGALS + PARTNERS

84 Orange Street
New Haven, CT 06510

203.786.5110
svigals.com

4075 Wilson Boulevard, 8th Floor
Arlington, VA 22203

202.870.4550

100 SE 3rd Avenue, Suite 1000
Fort Lauderdale, FL 33394

954.498.3826